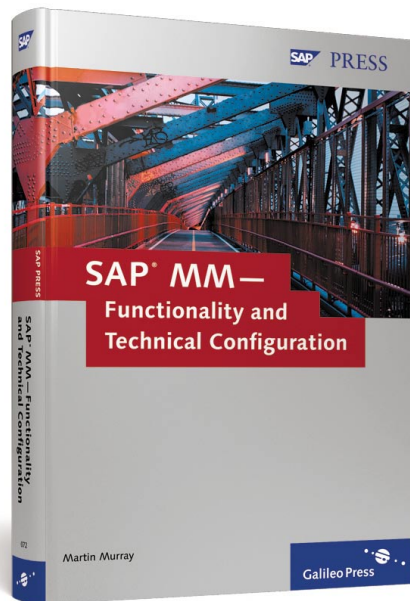


Martin Murray

# SAP MM— Functionality and Technical Configuration



**SAP** PRESS

# Contents

<b>1</b>	<b>Materials Management Overview</b>	<b>19</b>
1.1	Materials Management as a Part of SAP .....	19
1.1.1	SAP History .....	19
1.1.2	Core SAP Functionality .....	20
1.2	Materials Management as Part of Logistics .....	20
1.2.1	Definition of Logistics and Supply Chain .....	20
1.2.2	Management of the Supply Chain .....	21
1.2.3	SAP and Logistics .....	21
1.3	MM Integration with Other Modules .....	22
1.3.1	The Material Flow of the Supply Chain .....	22
1.3.2	The Information Flow of the Supply Chain .....	23
1.3.3	The Financial Flow of the Supply Chain .....	24
<b>2</b>	<b>MM Organizational Structure</b>	<b>25</b>
2.1	Client Structure .....	25
2.1.1	What is a Client? .....	25
2.1.2	Creating the Client Landscape .....	26
2.1.3	Defining a Client .....	27
2.1.4	Correction and Transport System (CTS) .....	27
2.2	Company Code .....	28
2.2.1	What is a Company? .....	28
2.2.2	Creating a Company Code .....	29
2.2.3	Assigning a Company Code .....	29
2.3	Plants .....	30
2.3.1	What is a Plant? .....	30
2.3.2	Prerequisites for a Plant .....	30
2.3.3	Defining a Plant .....	30
2.3.4	Valuation Level .....	32
2.3.5	Assigning a Plant .....	32
2.4	Storage Locations .....	33
2.4.1	What is a Storage Location? .....	33
2.4.2	Defining a Storage Location .....	33
2.4.3	Automatic Creation of Storage Locations .....	35
2.5	Warehouse and Storage Types .....	36
2.5.1	Assign a Warehouse to Plant and Storage Location .....	37
2.5.2	Storage Type .....	38
2.5.3	Storage Sections and Storage Bins .....	38

2.6	<b>Purchasing Organization</b> .....	39
2.6.1	What is a Purchasing Organization? .....	39
2.6.2	Types of Purchasing Organizations .....	39
2.6.3	Create a Purchasing Organization .....	40
2.6.4	Purchasing Groups .....	41

### **3 Master Data in MM 43**

3.1	<b>Material Master</b> .....	43
3.1.1	Material Master Overview .....	43
3.1.2	Material Master Tables .....	43
3.1.3	Material Numbering .....	44
3.1.4	Material Number Range .....	46
3.1.5	Material Type .....	46
3.2	<b>Vendor Master</b> .....	48
3.2.1	Definition of a Vendor .....	48
3.2.2	Vendor Master in SAP .....	48
3.2.3	Vendor Account Groups .....	49
3.2.4	Vendor Number Range .....	52
3.3	<b>Purchasing Information Data</b> .....	54
3.3.1	Purchasing Information Record .....	54
3.3.2	Purchasing Information Record for a Non-Stock Material .....	54
3.3.3	Purchasing Information Record Numbering .....	54
3.3.4	Purchasing Information Record-Screen Layout .....	55
3.4	<b>Batch Management Data</b> .....	57
3.4.1	What is a Batch? .....	57
3.4.2	Batch Level .....	57
3.4.3	Changing the Batch Level .....	58
3.4.4	Batch-Status Management .....	58
3.4.5	Initial Batch Status .....	59
3.4.6	Batch-Number Assignment .....	59
3.5	<b>Serial Number Data</b> .....	60
3.5.1	What is a Serial Number? .....	60
3.5.2	Serial Number Profile .....	60
3.5.3	Serializing Procedures .....	61

### **4 Material Master Data 63**

4.1	<b>Industry Sector</b> .....	63
4.2	<b>Material Type</b> .....	64
4.2.1	Standard Material Types .....	64
4.2.2	Configuring Material Types .....	67
4.2.3	Changing a Material Type .....	69
4.3	<b>Basic Data</b> .....	70
4.3.1	Creating a Material Master Record—Immediately .....	70
4.3.2	Creating a Material Master Record—Schedule .....	71

4.3.3	Creating a Material Master Record—Special .....	71
4.3.4	Organizational Levels .....	72
4.3.5	Basic Data Screen .....	74
<b>4.4</b>	<b>Classification Data</b> .....	<b>79</b>
4.4.1	Class Type .....	80
4.4.2	Classes .....	81
4.4.3	Characteristics .....	81
<b>4.5</b>	<b>Purchasing Data</b> .....	<b>81</b>
4.5.1	General Data .....	82
4.5.2	Purchasing Value Key .....	83
4.5.3	Other Data .....	86
4.5.4	Foreign Trade Data .....	87
4.5.5	Origin of Material .....	88
4.5.6	Preferences .....	88
4.5.7	Legal Control .....	89
4.5.8	Common Agricultural Policy (CAP) .....	89
4.5.9	Manufacturer Parts .....	89
<b>4.6</b>	<b>Forecasting Data</b> .....	<b>90</b>
4.6.1	General Forecast Data .....	91
4.6.2	Number of Periods Required .....	92
4.6.3	Control Data .....	92
<b>4.7</b>	<b>Work Scheduling Data</b> .....	<b>94</b>
4.7.1	General Data .....	95
4.7.2	Tolerance Data .....	96
4.7.3	Lot-Size Dependent In-House Production Time .....	96
4.7.4	Lot-Size Independent In-House Production Time .....	97
<b>4.8</b>	<b>Sales Organizational Data</b> .....	<b>97</b>
4.8.1	General Data .....	98
4.8.2	Grouping Items .....	99
4.8.3	Tax Data .....	100
4.8.4	Quantity Stipulations .....	100
4.8.5	Material Groups .....	102
4.8.6	Product Attributes .....	102
<b>4.9</b>	<b>Sales General Data</b> .....	<b>102</b>
4.9.1	General Data .....	103
4.9.2	Shipping Data .....	103
4.9.3	General Plant Parameters .....	104
<b>4.10</b>	<b>Production Resources and Tools Data</b> .....	<b>105</b>
4.10.1	General Data .....	105
4.10.2	Default Values for Task List Assignment .....	106
<b>4.11</b>	<b>General Plant Data</b> .....	<b>107</b>
4.11.1	General Data .....	107
4.11.2	Shelf-Life Data .....	110
<b>4.12</b>	<b>Warehouse Management Data</b> .....	<b>111</b>
4.12.1	General Data .....	112
4.12.2	Palletization Data .....	113
4.12.3	Storage Strategies .....	113
4.12.4	Storage Bin Stock .....	115

4.13	<b>Quality Management Data</b>	116
4.13.1	General Data	117
4.13.2	Procurement Data	118
4.14	<b>Material Requirements Planning Data</b>	119
4.14.1	Forecast Requirements	119
4.14.2	Planning	120
4.14.3	Availability Check	121
4.14.4	Bill of Materials Explosion	121
4.14.5	Discontinued Parts	122
4.14.6	Repetitive Manufacturing/Assembly	123
4.14.7	General Data	125
4.14.8	MRP Procedure	126
4.14.9	Lot Size Data	127
4.14.10	Procurement	128
4.14.11	Net Requirements Calculations	129
4.14.12	Deployment Strategy	130
4.15	<b>Accounting Data</b>	131
4.15.1	General Data	131
4.15.2	Current Valuation	132
4.15.3	Determination of Lowest Price	133
4.15.4	LIFO Data	133
4.16	<b>Costing Data</b>	134
4.16.1	General Data	135
4.16.2	Quantity Structure Data	135

## **5 Vendor Master Data 137**

5.1	<b>General Data</b>	137
5.1.1	Address Screen	138
5.1.2	Control Screen	140
5.1.3	Payment Transactions	143
5.2	<b>Accounting Information</b>	146
5.2.1	Accounting Information	146
5.2.2	Payment Transactions	150
5.2.3	Correspondence Screen	153
5.3	<b>Purchasing Data</b>	155
5.3.1	Purchasing Data Screen	156
5.3.2	Partner Functions	159

## **6 Purchasing Information Data 161**

6.1	<b>Purchasing General Data</b>	161
6.1.1	Create a Purchasing Information Record	161
6.1.2	Create a Purchasing Information Record with Material Number	162

6.1.3	Create a Purchasing Information Record without a Material Number .....	163
6.1.4	General Data Screen .....	163
<b>6.2</b>	<b>Purchasing Organization Data .....</b>	<b>165</b>
6.2.1	Conditions .....	166
6.2.2	Text Screen .....	169
6.2.3	Statistical Data .....	171

## **7 Batch Management Data 173**

<b>7.1</b>	<b>Batch Management Overview .....</b>	<b>173</b>
7.1.1	Batch Definition .....	173
7.1.2	Pharmaceutical Industry .....	174
<b>7.2</b>	<b>Batch Master Record .....</b>	<b>175</b>
7.2.1	Creating a Batch .....	175
7.2.2	Changing a Batch .....	181
7.2.3	Deleting a Batch .....	182
<b>7.3</b>	<b>Batch Determination .....</b>	<b>182</b>
7.3.1	Batch Determination Condition Tables .....	183
7.3.2	Batch Determination Access Sequences .....	183
7.3.3	Batch Strategy Types .....	183
7.3.4	Batch Search Procedure .....	185
<b>7.4</b>	<b>Batch Information Cockpit .....</b>	<b>186</b>
7.4.1	Batch Information Cockpit Overview .....	186
7.4.2	Batch Information Cockpit Standard Configuration .....	187
7.4.3	Batch Information Cockpit User-Defined Configuration .....	189

## **8 Material Master Record 191**

<b>8.1</b>	<b>Creating a Material Master Record .....</b>	<b>191</b>
8.1.1	Create a Material Master Record through a Schedule .....	191
<b>8.2</b>	<b>Changing a Material Master Record .....</b>	<b>193</b>
8.2.1	Change a Material Master Record—Immediately .....	193
8.2.2	Change a Material Master Record—Schedule .....	195
8.2.3	Change a Material Master Record—Activate .....	195
<b>8.3</b>	<b>Material Master Deletion .....</b>	<b>197</b>
8.3.1	Flag for Deletion—Immediately .....	197
8.3.2	Flag for Deletion—Schedule .....	198
8.3.3	Flag for Deletion—Proposal List .....	198
8.3.4	Material Master Archiving .....	199
8.3.5	Remove a Material-Deletion Flag .....	200
<b>8.4</b>	<b>Loading Material Master Records .....</b>	<b>200</b>
8.4.1	Loading Material Master Records via Direct Input .....	200
8.4.2	Distribution of Material Master Records via ALE .....	201

8.5	<b>Production Versions</b> .....	202
8.5.1	Production Version Overview .....	202
8.5.2	Creating a Production Version .....	202
8.5.3	Production Versions—Mass Processing .....	204
8.6	<b>Revision Levels</b> .....	205
8.6.1	Revision Level Overview .....	205
8.6.2	Revision Level Configuration .....	206

## **9 Vendor Master Record 207**

9.1	<b>Creating Vendor Master Record</b> .....	207
9.2	<b>Changing Vendor Master Record</b> .....	210
9.2.1	Change Vendor Master Record—Current .....	210
9.2.2	Change Vendor Master Record—Planned .....	211
9.2.3	Display Planned Changes to Vendor Master Records .....	212
9.2.4	Activate Planned Changes .....	212
9.2.5	Change Vendor Account Group .....	213
9.3	<b>Deleting Vendor Master Record</b> .....	214
9.3.1	Flag a Vendor Master Record for Deletion .....	214
9.3.2	Deleting Vendor Records via Archiving .....	215
9.4	<b>Display Vendor Master Record</b> .....	215
9.4.1	Display Vendor Master Record—Current .....	215
9.4.2	Display Vendor Master Record—Per Key Date .....	215
9.4.3	Display Vendors—Purchasing List .....	216
9.5	<b>Blocking Vendors</b> .....	217
9.5.1	Block a Vendor—Purchasing .....	217
9.6	<b>One Time Vendor</b> .....	218
9.7	<b>Vendor Sub-Range Functionality</b> .....	219

## **10 Purchasing Overview 221**

10.1	<b>Purchase Requisition</b> .....	221
10.2	<b>Request for Quotation</b> .....	222
10.3	<b>Quotation</b> .....	224
10.4	<b>Purchase Order</b> .....	225
10.5	<b>Source List and Source Determination</b> .....	226
10.5.1	Single Source .....	226
10.5.2	Multi-Source .....	227
10.5.3	Generate a Source List .....	229
10.5.4	Source Determination .....	230
10.6	<b>Conditions in Purchasing</b> .....	231
10.6.1	Condition Processing .....	231
10.6.2	Pricing Conditions .....	232
10.6.3	Taxes .....	233
10.6.4	Delivery Costs .....	233

<b>10.7</b>	<b>Vendor Evaluation</b> .....	<b>233</b>
10.7.1	Vendor Evaluation Overview .....	233
10.7.2	Vendor Evaluation Criteria .....	235
10.7.3	Vendor Evaluation Weighting .....	236
10.7.4	Points Scoring for Criteria .....	237
10.7.5	Maintain Vendor Evaluation .....	238
10.7.6	Scoring for Automatic and Semi-Automatic Criteria .....	239
10.7.7	Evaluation for a Material .....	240

## **11 Purchase Requisition 243**

<b>11.1</b>	<b>Indirectly Created Requisition</b> .....	<b>243</b>
11.1.1	Purchase Requisition Created by Production Order .....	243
11.1.2	Purchase Requisition Created by Plant Maintenance Order .....	243
11.1.3	Purchase Requisition Created by Project Systems .....	244
11.1.4	Purchase Requisition Created by Materials Planning .....	244
<b>11.2</b>	<b>Directly Created Requisition</b> .....	<b>244</b>
11.2.1	Create a Purchase Requisition with a Material Master Record ...	245
11.2.2	Create a Purchase Requisition without a Material Master Record .....	250
<b>11.3</b>	<b>Processing a Purchase Requisition</b> .....	<b>251</b>
11.3.1	Change a Purchase Requisition .....	251
11.3.2	Display a Purchase Requisition .....	251
11.3.3	Close a Purchase Requisition .....	253
11.3.4	Follow-on Functions .....	253

## **12 Request for Quotation 255**

<b>12.1</b>	<b>Creating a Request for Quotation</b> .....	<b>255</b>
12.1.1	RFQ Type .....	256
12.1.2	RFQ Date .....	257
12.1.3	Quotation Deadline .....	257
12.1.4	RFQ Document Number .....	257
12.1.5	Organizational Data .....	257
12.1.6	Default Data for Items .....	257
12.1.7	Collective Number .....	258
12.1.8	Validity Start/Validity End .....	259
12.1.9	Application By .....	259
12.1.10	Binding Period .....	259
12.1.11	Reference Data .....	259
12.1.12	RFQ Item Detail .....	260
12.1.13	RFQ Delivery Schedule .....	260
12.1.14	Additional Data .....	261
12.1.15	Vendor Selection .....	262
<b>12.2</b>	<b>Changing a Request for Quotation</b> .....	<b>263</b>
<b>12.3</b>	<b>Releasing an RFQ</b> .....	<b>265</b>
12.3.1	Release Code/Release Group/Release Strategy .....	266

12.3.2	Set Release/Cancel Release .....	266
12.3.3	Release Prerequisite Fulfilled .....	266
12.3.4	List With items .....	266
12.3.5	Scope of List .....	266
12.3.6	Purchasing Document Category .....	267
12.3.7	Other Selection Criteria .....	267
12.4	Issuing a Request for Quotation to a Vendor .....	267

## **13 Quotation 269**

13.1	Entering a Quotation .....	269
13.2	Comparing Quotations .....	270
13.2.1	Price Comparison Factor in Quotations .....	271
13.2.2	Other Qualitative Factors in Quotations .....	273
13.3	Rejecting Quotations .....	274
13.3.1	Flagging the Quotation as Rejected .....	274
13.3.2	Printing the Quotation Rejection .....	275
13.3.3	Advising Unsuccessful Bidders .....	275

## **14 Purchase Order 277**

14.1	Create a Purchase Order .....	277
14.1.1	Create a Purchase Order with Vendor Known .....	277
14.1.2	Create a Purchase Order Where Vendor is Unknown .....	279
14.2	Maintaining a Purchase Order .....	280
14.3	Blocking and Canceling a Purchase Order .....	281
14.3.1	Block a Purchase Order Line Item .....	281
14.3.2	Canceling a Purchase Order Line Item .....	281
14.4	Account Assignment in a Purchase Order .....	282
14.4.1	Account Assignment Overview .....	282
14.4.2	Account Assignment Categories .....	282
14.4.3	Single Account Assignment .....	284
14.4.4	Multiple Account Assignment .....	285
14.5	Outline Purchase Agreement pause .....	286
14.5.1	Outline Purchase Agreement Overview .....	286
14.5.2	Outline Purchase Agreement Types .....	286
14.6	Scheduling Agreement .....	287
14.6.1	Scheduling Agreement Overview .....	287
14.6.2	Create a Scheduling Agreement Manually .....	287
14.6.3	Create a Scheduling Agreement with Reference .....	289
14.7	Contracts .....	290
14.7.1	Contract Overview .....	290
14.7.2	Centrally Agreed Contract .....	291
14.7.3	Creating a Contract .....	291
14.7.4	Release Order Against a Contract .....	293

14.8	Vendor Confirmation .....	294
14.8.1	Vendor Confirmation Overview .....	294
14.8.2	Confirmation Configuration .....	295
14.8.3	Enter a Manual Confirmation .....	296
14.9	Messages and Outputs .....	297
14.9.1	Message Overview .....	297
14.9.2	Message Creation .....	298
14.9.3	Message Output Definition .....	298
14.9.4	Output Messages .....	299
14.10	Reporting .....	300
14.10.1	Reporting Overview .....	300
14.11	Release Procedures .....	300
14.11.1	Introduction to Release Procedures .....	300
14.11.2	Release with Classification for a Purchase Requisition .....	301

## **15 External Service Management (ESM) 303**

15.1	Service Master Record .....	303
15.1.1	Service Number .....	303
15.1.2	Service Category .....	303
15.1.3	Material/Service Group .....	305
15.1.4	Tax Indicator .....	305
15.1.5	Valuation Class .....	305
15.1.6	Formula .....	305
15.1.7	Graphic .....	306
15.2	Standard Service Catalog (SSC) .....	307
15.2.1	Overview .....	307
15.2.2	Creating a SSC Entry .....	307
15.3	Conditions in ESM .....	308
15.3.1	Total Price Condition .....	309
15.4	Procurement of Services .....	310
15.4.1	Using a Purchase Order .....	310
15.5	Entry of Services .....	312
15.5.1	Service Entry Sheet .....	312
15.6	Blanket Purchase Order .....	314
15.6.1	Creating a Blanket Purchase Order .....	314

## **16 Consumption-Based Planning 317**

16.1	Master Data in CBP .....	317
16.1.1	Material Master Record .....	317
16.1.2	Planning Calendar .....	318

16.2	Planning Process .....	320
16.2.1	Planning at the Plant Level .....	320
16.2.2	Planning at the Storage Location Level .....	320
16.3	Planning Evaluation .....	322
16.3.1	MRP List .....	322
16.3.2	Stock/Requirements List .....	323
16.4	Procurement Proposal .....	324
16.4.1	Purchase Requisitions .....	324
16.4.2	Schedule Lines .....	325
16.4.3	Planned Orders .....	325

## **17 Material Requirements Planning 327**

17.1	Reorder Point Planning .....	327
17.1.1	Manual Reorder Point Planning .....	327
17.1.2	Automatic Reorder Point Planning .....	328
17.2	Forecast-Based Planning .....	329
17.3	Time-Phased Planning .....	330

## **18 Forecasting 333**

18.1	Forecast Models .....	333
18.1.1	Constant Model .....	334
18.1.2	Trend Model .....	334
18.1.3	Seasonal Model .....	334
18.1.4	Seasonal Trend Model .....	334
18.2	Forecast Parameters .....	335
18.2.1	Create Forecast Profile .....	335
18.3	Forecast Options .....	338
18.3.1	Manual Forecast Model Selection .....	339
18.3.2	Automatic Forecast Model Selection .....	339

## **19 Inventory Management Overview 341**

19.1	Goods Movements .....	342
19.1.1	Material Document .....	342
19.1.2	Movement Types .....	343
19.2	Goods Issue .....	345
19.3	Goods Receipt .....	345
19.4	Physical Inventory .....	345
19.5	Returns .....	346
19.5.1	Introduction to Returns .....	346
19.5.2	Creating a Return .....	346

19.5.3	Configuring Reason for Movement .....	347
19.5.4	Material Documents .....	349
<b>19.6</b>	<b>Reservations .....</b>	<b>351</b>
19.6.1	Introduction to Reservations .....	351
19.6.2	Creating a Manual Reservation .....	351
19.6.3	MRP and Reservations .....	353
19.6.4	Reservations Management Program .....	354
<b>19.7</b>	<b>Stock Transfers .....</b>	<b>356</b>
19.7.1	Stock Transfer and Transfer Posting .....	356
19.7.2	Transfer Between Storage Locations .....	357
19.7.3	Transfer Between Plants .....	359
19.7.4	Transfer between Company Codes .....	360

## **20 Goods Issue 361**

<b>20.1</b>	<b>Goods Issue to a Production Order .....</b>	<b>361</b>
20.1.1	Planned Goods Issue .....	361
20.1.2	Unplanned Goods Issue .....	363
20.1.3	Backflushing .....	364
<b>20.2</b>	<b>Goods Issue to Scrap .....</b>	<b>365</b>
<b>20.3</b>	<b>Goods Issue for Sampling .....</b>	<b>366</b>
<b>20.4</b>	<b>Goods Issue Posting .....</b>	<b>367</b>
20.4.1	Material Document .....	367
20.4.2	Accounting Document .....	367
20.4.3	Goods Issue Slip .....	367
20.4.4	Stock Changes .....	368
20.4.5	General Ledger Account Changes .....	369
<b>20.5</b>	<b>Goods Issue Reversal .....</b>	<b>369</b>
20.5.1	Goods Issue Reversal with Reference to a Material Document ..	369
20.5.2	Goods Issue Reversal with Reference to a Reservation .....	370

## **21 Goods Receipt 373**

<b>21.1</b>	<b>Goods Receipt for a Purchase Order .....</b>	<b>373</b>
21.1.1	Goods Receipt Where Purchase Order Number is Known .....	373
21.1.2	Goods Receipt Where Purchase Order Number is Unknown .....	375
21.1.3	Goods Receipt Posting .....	376
<b>21.2</b>	<b>Goods Receipt for a Production Order .....</b>	<b>377</b>
<b>21.3</b>	<b>Initial Entry of Inventory .....</b>	<b>379</b>
<b>21.4</b>	<b>Other Goods Receipts .....</b>	<b>380</b>
21.4.1	Goods Receipt Without a Production Order .....	380
21.4.2	Goods Receipt of By-products .....	381
21.4.3	Goods Receipt for Free Goods .....	382

## **22 Physical Inventory 383**

<b>22.1 Physical Inventory Preparation</b> .....	<b>383</b>
22.1.1 Preparations for a Physical Inventory Count .....	384
22.1.2 Creating the Physical Inventory Count Document .....	384
22.1.3 Printing the Physical Inventory Count Documents .....	386
<b>22.2 Counting and Recounts</b> .....	<b>387</b>
22.2.1 Entering the Count .....	387
22.2.2 Difference List .....	388
22.2.3 Missing Material .....	389
22.2.4 Recounts .....	389
<b>22.3 Physical Inventory Posting</b> .....	<b>390</b>
22.3.1 Posting the Count Document .....	390
22.3.2 Posting a Count Without a Document .....	391
22.3.3 Accounting of Inventory Differences .....	393

## **23 Invoice Verification 395**

<b>23.1 Standard Three-Way Match</b> .....	<b>395</b>
23.1.1 Entering an Invoice .....	395
23.1.2 Simulate Posting .....	397
23.1.3 Invoice Posting .....	398
<b>23.2 Evaluated Receipt Settlement (ERS)</b> .....	<b>398</b>
23.2.1 Benefits of ERS .....	398
23.2.2 Running the Evaluated Receipt Settlement .....	399
<b>23.3 Document Parking</b> .....	<b>400</b>
23.3.1 Document Parking Overview .....	400
23.3.2 Benefits of Document Parking .....	400
23.3.3 Parking an Invoice .....	401
<b>23.4 Variances and Blocking Invoices</b> .....	<b>401</b>
23.4.1 Variances .....	401
23.4.2 Tolerance Limits .....	402
23.4.3 Blocking Invoices .....	404
23.4.4 Manual Block .....	404
23.4.5 Stochastic or Random Block .....	405
23.4.6 Block due to Amount of an Invoice Item .....	407
23.4.7 Block due to Variance of an Invoice Item .....	408
<b>23.5 Releasing Invoices</b> .....	<b>409</b>
23.5.1 Releasing Invoices Automatically .....	409

## **24 Balance Sheet Valuation 411**

24.1	LIFO Valuation .....	411
24.1.1	Configuration for LIFO .....	412
24.1.2	Preparation for LIFO .....	413
24.1.3	Running a LIFO Valuation .....	415
24.2	FIFO Valuation .....	416
24.2.1	Configuration for FIFO .....	416
24.2.2	Preparation for FIFO .....	417
24.2.3	Running a FIFO Valuation .....	417
24.3	Lowest Value Determination .....	419
24.3.1	Lowest Value Determination Based on Market Prices .....	419
24.3.2	Lowest Value Determination Based on Range of Coverage .....	421
24.3.3	Lowest Value Determination Based on Movement Rate .....	422

## **25 Material Ledger 425**

25.1	Material Ledger Overview .....	425
25.1.1	Activating the Material Ledger and Actual Costing .....	425
25.2	Material Ledger Data .....	426
25.2.1	Material Master Record .....	426
25.2.2	Data for the Material Ledger .....	427
25.3	Material Price Determination .....	428
25.3.1	Material Price Analysis .....	428
25.3.2	Single-Level Material Price Determination .....	429
25.3.3	Multi-Level Material Price Determination .....	430
25.3.4	Transaction-Based Material Price Determination .....	430

## **26 Classification System 433**

26.1	Classification Overview .....	433
26.1.1	What is a Classification System? .....	433
26.1.2	Describing an Object .....	434
26.2	Characteristics .....	434
26.2.1	Create Characteristics .....	434
26.2.2	Configuring Characteristics .....	436
26.3	Classes .....	438
26.3.1	Create Classes .....	438
26.4	Class Type .....	439
26.4.1	Class Type Overview .....	439
26.4.2	Configuring a Class Type .....	440

26.5	<b>Class Hierarchies</b> .....	442
26.5.1	Creating a Class Hierarchy .....	442
26.5.2	Inherited Characteristics .....	443
26.6	<b>Object Dependencies</b> .....	443
26.6.1	Object Dependency Overview .....	443
26.6.2	Dependency Creation .....	444
26.7	<b>Finding Objects Using Classification</b> .....	444
26.7.1	Classifying Materials .....	444
26.7.2	Classifying Objects .....	446
26.7.3	Finding Objects .....	447

## **27 Document Management 449**

27.1	<b>Document Management Overview</b> .....	449
27.2	<b>Document Information Record</b> .....	449
27.2.1	Document Number .....	449
27.2.2	Document Type .....	450
27.2.3	Document Part .....	451
27.2.4	Document Version .....	451
27.2.5	Document Status .....	451
27.3	<b>Creating a Document</b> .....	452
27.3.1	Create a Document .....	452
27.4	<b>Linking an Object to a Document</b> .....	453
27.4.1	Configuration for Linking Documents .....	453
27.4.2	Linking a Document to a Material Master Record .....	453
27.4.3	Linking a Document to a Vendor Master Record .....	454
27.5	<b>Documents and Classification</b> .....	455
27.5.1	Using Classification for Documents .....	455

## **A Bibliography 457**

## **B Glossary 459**

## **C About the Author 465**

## **Index 467**

To successfully manage this client environment, there should be strict procedures and security so that the integrity of the clients is maintained.

### **2.1.3 Defining a Client**

There are four aspects to be considered when defining a client. These are described below.

#### **Organizational Structure**

The customer should define a client as the highest organizational unit in its organizational structure. The client is the basis for the construction and configuration of other organizational units.

#### **Business Environment**

A client should be a representation of a holding company or group of companies in the physical business world.

#### **Technical Environment**

The client defines the boundary of the master data. The information can only be accessed inside the client.

#### **Work Environment**

The client is the work area that end users interact with the system. Ninety percent of the tables in the client are client dependent.

### **2.1.4 Correction and Transport System (CTS)**

Changes created in the development client must be moved, or transported, to the quality client for testing and then to the production client. The CTS is the vehicle by which you can move objects such as programs, screens, configurations, or security settings from one client to another. The CTS provides consistency between the clients by maintaining log entries. The CTS provides a standardized procedure for managing and recording changes made to a client.

When you are configuring functionality in the development client that has been designated as the client to migrate from, you will find that saving the configuration will require extra steps.

On saving, there will be an **Enter change request** dialog screen. This will require you to either add this configuration step to an existing Customizing request or to create a new request. If you opt to create a new request, another pop-up screen will appear that requires a short description of the change you are making and

that may default the other information, such as your user ID, source client, category, and target client. If the target client is blank, ensure that you enter the correct target client for your change request.

On saving this change request, the system will display the change-request number. The system will have saved the configuration change you have made and logged that change in the change request.

The change request can be viewed by using transaction code SE01. On the initial screen, enter the change request number, or press F4 to find your request. Click on the display button and the request will be displayed. By expanding the view it is possible to see the changes that have been made to the tables in the current client and that will be migrated to the target client. If you have authorization, you may also release the change request so that it can be migrated. If you do not have authorization, the change request will need to be released by a designated resource.

By using transaction code SE10, you are able to see all requests and repairs that are owned by a user ID. It is important to note that a change request cannot be released if it is empty, if the objects are not locked properly, or if the objects are not locked in another task or change request. The next section will explain the functionality of company codes, creating and assigning a client.

## **2.2 Company Code**

### **2.2.1 What is a Company?**

The U.S. Census Bureau (2002) defines a company as follows:

"A company comprises all the establishments that operate under the ownership or control of a single organization. A company may be a business, service, or membership organization; it may consist of one or several establishments and operate at one or several locations. It includes all subsidiary organizations, all establishments that are majority-owned by the company or any subsidiary, and all the establishments that can be directed or managed by the company or any subsidiary."

SAP defines a company and a company code separately. SAP defines a company as the smallest organizational unit for which legal financial statements can be prepared. A company can contain one or more company codes, but they must use the same chart of accounts and the same fiscal-year breakdown.

SAP defines a company code as the smallest organizational unit for which a complete self-contained set of accounts can be drawn up. You will be able provide data for generating balance sheets and profit-loss statements. The company code

will represent legally independent companies. Using more than one company code allows a customer to manage financial data for different independent companies at the same time.

For example, when a customer is deciding on its organizational structure, the customer can use one or many company codes. Thus, if a U.S. company has components of its organization in Canada and in Mexico, it may decide that it should use three company codes. The company-code currencies can be different for each component, but they would be required to use the same chart of accounts.

### **2.2.2 Creating a Company Code**

The creation of a company and company codes is usually part of the Financials configuration, but you may need to create these on occasion.

The company field is defined in transaction OX15. It is defined as a six-character alphanumeric string. The navigation path is **IMG • Enterprise Structure • Definition • Financial Accounting • Maintain Company**.

The company code can be created using transaction OX02. The navigation path is **IMG • Enterprise Structure • Definition • Financial Accounting • Define, Copy, Delete, Check Company Code**. The field is defined as a four-character alphanumeric string. In transaction OX02, it is possible to copy from an existing company code and change the name, city, and country to your company details. This transaction will update table T001.

After creating the company code, you will need to maintain the company-code address. To do this you need to use transaction OBY6. This transaction will update table SADR.

### **2.2.3 Assigning a Company Code**

Once a company code has been defined, it must be assigned to a number of objects. In the IMG, there are a number of financial configuration steps that need to be carried out. The company code can be assigned to the following:

- ▶ Credit Control Area
- ▶ Financial Management Area
- ▶ Company

The next section follows on from the SAP structure of a company to the structure, creation and assignment of a plant.

## 2.3 Plants

### 2.3.1 What is a Plant?

The definition of a plant depends on its use. From a materials-management view, a plant can be defined as a location that holds valuated stock. A production-planning view defines a plant as an organizational unit that is central to production planning. A plant also can be defined as a location that contains service or maintenance facilities. The definition of a plant will vary depending on the need of the customer.

### 2.3.2 Prerequisites for a Plant

Before setting up a plant, certain other settings need to be defined. These are described below.

#### **Factory Calendar**

A factory calendar identifies the workdays, public holidays, and company holidays. The SAP system is delivered with some factory calendars, but a new factory calendar can be configured based on a company's schedule.

#### **Country Key**

A country key is required to define a plant. The system is delivered with country keys, and new country codes need to be configured if they are not in the system.

#### **Region Keys**

A region code is required along with the country code. The region is defined as a state or province associated with a country.

### 2.3.3 Defining a Plant

A four-character string defines the plant field. It can be configured using transaction OX10. The navigation path is **IMG • Enterprise Structure • Definition • Logistics—General • Define, Copy, Delete, Check Plant**.

Figures 2.1 and 2.2 show, respectively, the program screen for entering initial plant information and the screen for entering secondary information once the initial information is entered.

**New Entries: Details of Added Entries**

Table View Edit Goto Selection Utilities System Help

Plant

Name 1

Name 2

**Detailed information**

Language Key

House No. and Street

PO Box

Postal Code

City

Country Key

Region

County code

City code

Jurisdiction Code

Factory calendar

Figure 2.1 Initial Screen for Entering a Plant

**Edit address:**

**Name**

Title

Name

**Search terms**

Search term 1/2

**Street address**

Street/House number

Postal code/City

Country  Region

**PO box address**

PO Box

Postal Code

Company postal code

**Communication**

Language  Other communication...

Telephone  Ext.

Mobile Phone

Fax  Ext.

E-Mail

Standard Comm. Method

Figure 2.2 Screen for Entering Secondary Information

### 2.3.4 Valuation Level

The valuation level is an important configuration step because it specifies the level at which material stocks are valued for the whole client. There are two options for the valuation level: plant level or company code level.

The valuation level can be defined using OX14. The navigation path is **IMG · Enterprise Structure · Definition · Logistics—General · Define Valuation Level**.

There are several situations in which there should be valuation at the plant level, e.g., if Production Planning or Costing will be implemented, or if the application is using the SAP retail system. Once a valuation is determined, it should not be changed.

### 2.3.5 Assigning a Plant

Once a valuation level has been established, it is possible to assign a plant to an existing company code. This assignment is performed so that all plant transactions can be attributed to a single legal entity; that is, a company code. This can be achieved in OX18. The path for this transaction is **IMG · Enterprise Structure · Assignment · Logistics—General · Assign Plant to Company Code**.

Figure 2.3 illustrates the assignment of plants to company codes. A plant is assigned to one company code, but a company code can have more than one plant assigned to it.

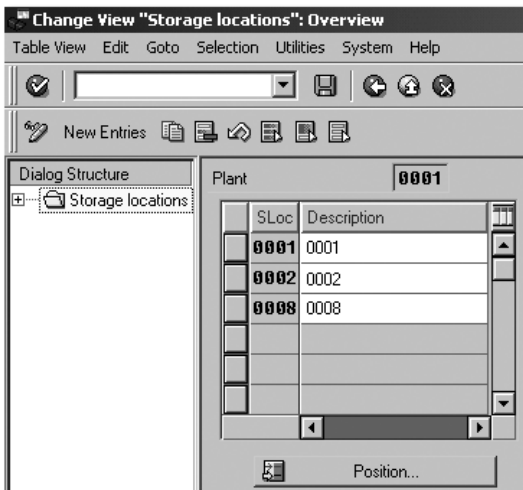


Figure 2.3 Assignment of Plants to Company Codes

This section has described the importance of the plant within the organizational structure and now in the next section, the storage location functionality is explained.

## **2.4 Storage Locations**

### **2.4.1 What is a Storage Location?**

In its systems, SAP traditionally defines a storage location as a place where stock is physically kept within a plant. There will always be at least one storage location defined for one plant. It is the lowest level of location definition within the Materials Management module.

When we look at a physical storage location, there are no set rules on how a storage location should look. Some SAP customers may have a highly developed inventory-monitoring system that uniquely defines a physical location, storage bin, tank, tote, tray, draw, cabinet, etc., as a location that contains inventory separated from other inventory. Depending on the physical size of the materials involved, this may be as small as a 5cm square bin or as large as a whole building.

Some customers may not have sophisticated inventory systems, and you may be presented by a location with no obvious storage definitions. Materials may not be stored in individual locations and may be mixed without procedural picking or placement strategies. In this case, an assessment of the current state and proposals on how to re-engineer the storage facility would be appropriate before trying to define storage locations.

Although the storage location is the lowest location level in Materials Management, it is not the lowest level in the SAP system. Depending on the requirements of the SAP customer, the number of materials that are stored, the number of unique locations, and the sophistication of the customer's current inventory system, there may be a need to implement the Warehouse Management module. This provides the opportunity to manage inventory at a bin level.

When Warehouse Management (WM) is implemented in an SAP system, there is a need to tie the Warehouse Management functionality to Materials Management. This is achieved by assigning a warehouse to a storage location or number of storage locations.

### **2.4.2 Defining a Storage Location**

A four-character string defines the storage location. It can be configured using transaction OX09. The navigation path is **IMG • Enterprise Structure • Definition • Materials Management • Maintain Storage Location**.

Enter the plant number in the initial screen of OX09 (see Figure 2.4). This will then direct you to the screen shown in Figure 2.4. Press the **New Entries** button and then you can add the storage location number and a description. Then highlight your new storage location and click on the addresses of storage location in the dialog structure.

Click on the **New Entries** field to enter a number for the storage location address (see Figure 2.5). This can be up to three characters. Once entered you will be directed to another screen for the entry of secondary information such as address and telephone number. This screen is shown in Figure 2.2.



Figure 2.4 Initial Screen of OX09

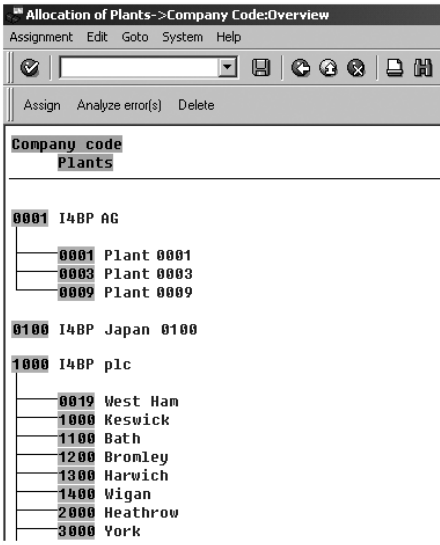


Figure 2.5 Entering a Number for the Storage Location Address

### 2.4.3 Automatic Creation of Storage Locations

It is possible to create storage locations automatically when an inward goods movement for a material is performed. The configuration needs the plant and/or the type of movement to be defined to allow the automatic creation of storage locations.

This configuration can reduce storage-location data maintenance. The automatic storage location will only be activated if the movement is for normal stock, not special stock.

This configuration can be entered using transaction OMB3. The navigation path is **IMG · Materials Management · Inventory Management and Physical Inventory · Goods Receipt · Create Storage Location Automatically**.

Automatic creation of storage locations can be set for each plant where this functionality is needed (see Figure 2.6) or for a particular goods movement (see Figure 2.7).



Plant	Name 1	Create SLoc. automat.
0001	Plant 0001	<input checked="" type="checkbox"/>
0003	Plant 0003	<input checked="" type="checkbox"/>
0008	Plant 0008	<input checked="" type="checkbox"/>
0009	Plant 0009	<input checked="" type="checkbox"/>
1100	Bath	<input checked="" type="checkbox"/>
1400	Wigan	<input checked="" type="checkbox"/>
2000	Heathrow	<input checked="" type="checkbox"/>
7010	Basildon	<input checked="" type="checkbox"/>
7100	Porto	<input checked="" type="checkbox"/>
7200	Paris	<input checked="" type="checkbox"/>
7300	Barcelona	<input checked="" type="checkbox"/>
7400	Milan	<input checked="" type="checkbox"/>
7500	Rotterdam	<input checked="" type="checkbox"/>
7505	Lausanne	<input checked="" type="checkbox"/>

Figure 2.6 Automatic Storage-Location Creation by Plant

The storage location is the lowest level of the organizational structure of the MM module. However, in the next section we will examine how the Warehouse Management module interfaces with the MM module.

MvT	Movement Type Text	Create SLoc. automat.
101	GR goods receipt	<input checked="" type="checkbox"/>
102	Reversal of GR	<input type="checkbox"/>
103	GR into blocked stck	<input type="checkbox"/>
104	Rev. GR to blocked	<input type="checkbox"/>
105	GR from blocked stck	<input checked="" type="checkbox"/>
106	Rev. GR from blocked	<input type="checkbox"/>
121	GR subseq. adjustm.	<input type="checkbox"/>
122	RE return to vendor	<input type="checkbox"/>
123	RE rtn vendor rev.	<input checked="" type="checkbox"/>
124	GR rtn blocked stck	<input type="checkbox"/>
125	GR rtn blkd stck rev	<input checked="" type="checkbox"/>
161	GR returns	<input type="checkbox"/>
201	GI for cost center	<input type="checkbox"/>
202	RE for cost center	<input type="checkbox"/>
221	GI for project	<input type="checkbox"/>
222	RE for project	<input type="checkbox"/>

Figure 2.7 Automatic Storage-Location Creation by Movement Type

## 2.5 Warehouse and Storage Types

Although not part of Materials Management functionality, it is important to understand the integration points with Warehouse Management (WM). It is important for MM users to have some knowledge of WM as many companies implement both MM and WM. The warehouse is linked to the MM module by assigning the warehouse to the storage location in MM and if a company has WM and MM activated, the goods movements will require knowledge of the major elements of WM.

A warehouse is a physical location that contains defined areas that are called Storage Types, and these are then further divided into smaller locations called Storage Bins. In Warehouse Management, it is possible to define stock placement and picking strategies based on material location and sequence.

To create a warehouse, use the following path **IMG • Enterprise Structure • Definition • Logistics Execution • Define, Copy, Delete, Check Warehouse**.

The warehouse is defined by a three-character string (see Figure 2.8). There are no address details associated with a warehouse.

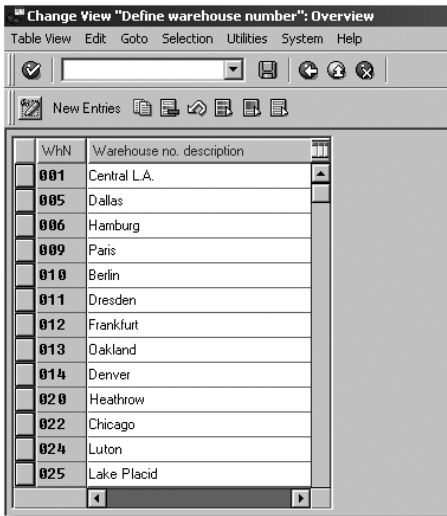


Figure 2.8 Defining the Warehouse

### 2.5.1 Assign a Warehouse to Plant and Storage Location

The way to ensure that the SAP identifies that certain storage locations are controlled by the functionality in Warehouse Management is to assign a warehouse to a storage location. The navigation path for assigning a warehouse to a plant and storage location is **IMG · Enterprise Structure · Assignment · Logistics Execution · Assign Warehouse Number to Plant/Storage Location**. Figure 2.9 shows the display view.

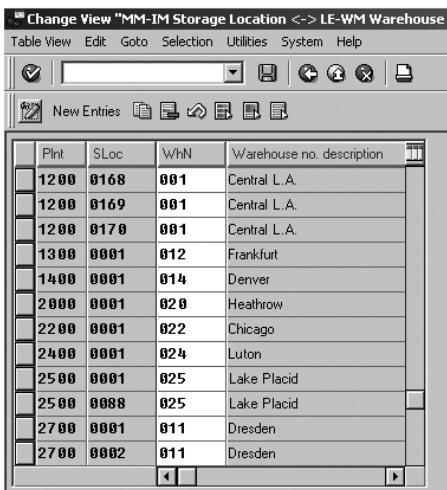


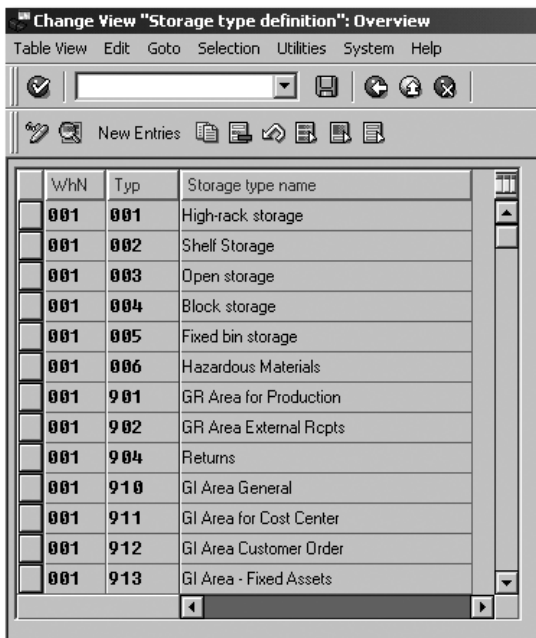
Figure 2.9 Assigning a Warehouse to a Plant/Storage Location Combination.

## 2.5.2 Storage Type

A storage type is defined as an area of the warehouse that is a sub-section containing a number of storage bins. The storage type is available to the warehouse user for creating searches based on storage types. Common storage types in a warehouse will be areas such as **Cold Room**, **Bulk Storage**, and **High Rack Area**. Storage types pre-defined by SAP are called interim storage types. These are defined numerically from 900 to 999. The areas are used by SAP for movement postings such as goods receipt, goods issue, and posting differences.

The navigation path for creating storage types is **IMG • Logistics Execution • Warehouse Management • Master Data • Define Storage Type**.

Each warehouse can have any number of storage types defined (see Figure 2.10).



The screenshot shows the SAP Change View 'Storage type definition': Overview. The window title is 'Change View "Storage type definition": Overview'. The menu bar includes 'Table View', 'Edit', 'Goto', 'Selection', 'Utilities', 'System', and 'Help'. Below the menu bar is a toolbar with icons for search, save, and navigation. A second toolbar contains 'New Entries' and several document icons. The main area displays a table with the following data:

WhN	Typ	Storage type name
001	001	High-rack storage
001	002	Shelf Storage
001	003	Open storage
001	004	Block storage
001	005	Fixed bin storage
001	006	Hazardous Materials
001	901	GR Area for Production
001	902	GR Area External Rcpts
001	904	Returns
001	910	GI Area General
001	911	GI Area for Cost Center
001	912	GI Area Customer Order
001	913	GI Area - Fixed Assets

Figure 2.10 Warehouse with Storage Types Defined

## 2.5.3 Storage Sections and Storage Bins

A subdivision of the storage type is the storage section. This is simply a group of similar storage bins. Even if the customer does not want to define storage sections, one storage section must be defined per storage type. This is normally defined as 001 in the IMG. The navigation path is **IMG • Logistics Execution • Warehouse Management • Master Data • Define Storage Section**.

Storage bins are the lowest level of storage. Storage bins are not defined in the IMG. Authorized warehouse staff can quickly and frequently change these. Storage bins can be defined manually using transaction LS01N or automatically by using transaction LS10.

Now that the structural organization of Materials Management is defined for the physical elements, the next section goes on to explain an important logical aspect of MM, the Purchasing and the Purchasing Organization.

## **2.6 Purchasing Organization**

### **2.6.1 What is a Purchasing Organization?**

The purchasing function within SAP customers can range from simple to very complex. The largest SAP customers may spend hundreds of millions of dollars in purchasing each year and have a sophisticated purchasing department that works at many different levels, from strategic global procurement to low-level vendor relationships. SAP can be defined to allow all purchasing departments to be accurately reflected.

A purchasing organization is simply defined as a group of purchasing activity that is associated with all or a specific part of the enterprise.

### **2.6.2 Types of Purchasing Organizations**

#### **Purchasing at an Enterprise Level**

Purchasing for a SAP customer may take place at the highest level within an organization. If a customer has a central purchasing department that co-ordinates purchasing for all companies within the enterprise, then the purchasing organization can be configured in that manner. The purchasing organization is defined in SAP and then assigned to all companies.

#### **Purchasing at the Company Level**

If a SAP customer does not have a single enterprise wide purchasing function, it may have purchasing centralized for each company. This may be appropriate for customers with companies in various countries, in which case an enterprise purchasing department may not be possible. In this scenario the purchasing organization is created and assigned for each company code. Even with this scenario, a purchasing organization may cover several companies. For example, a purchasing organization for Latvia may be assigned as the purchasing organization for the companies based in the countries of Latvia, Lithuania, and Estonia.

The purchasing organization can be assigned to a company code by using transaction OX01. The navigation path is **IMG • Enterprise Structure • Assignment • Materials Management • Assign Purchasing Organization to Company Code**.

### **Purchasing at the Plant Level**

In an enterprise that has companies with large autonomous plants the purchasing decisions may be made at a local level. The SAP customer may decide that assigning one purchasing organization to one company is not appropriate, and it would be a better business decision to assign a purchasing organization at the plant. This scenario has an advantage when the vendors are at a local level and few vendors supply materials or services to more than one plant.

The purchasing organization can be assigned to a plant transaction OX17. The navigation path is **IMG • Enterprise Structure • Assignment • Materials Management • Assign Purchasing Organization to Plant**.

### **Reference Purchasing Organization**

One purchasing organization can be defined as a reference purchasing organization. This is a purchasing organization that can be set up as a strategic purchasing department. In large companies, the strategic purchasing function analyses purchasing data and works to negotiate the best prices for material and services from global vendors. This strategic purchasing department can obtain prices and special conditions that can be used by purchasing organizations across the enterprise.

Often this reference purchasing organization is not assigned to any company code, as it is a function of the whole enterprise. A purchasing organization must be assigned to this reference purchasing organization to have access to the information on the system.

To assign a purchasing organization that will reference another purchasing organization, the navigation path is **IMG • Enterprise Structure • Assignment • Materials Management • Assign Purchasing Organization to Reference Purchasing Organization**.

### **2.6.3 Create a Purchasing Organization**

The navigation path to create a purchasing organization is **IMG • Enterprise Structure • Definition • Materials Management • Maintain Purchasing Organization**.

Figure 2.11 shows the screen for creating a purchasing organization.

Purch. Organization	Purch. org. descr.
0001	I4BP AG
1000	I4BP Japan
1791	I4BP Latvia
2000	I4BP plc
2100	I4BP India
2200	I4BP Sri Lanka
2300	I4BP Spain
2400	I4BP Italy
2500	I4BP Niederlande
2700	I4BP Schweiz
3000	I4BP Mexico
3010	I4BP Peru
3111	I4BP Argentina
4000	I4BP Canada
4500	I4BP Norway

Figure 2.11 Creating a Purchasing Organization

## 2.6.4 Purchasing Groups

An SAP customer has the opportunity to define its purchasing department below the level of purchasing organization. The purchasing group can be defined as a person or group of people dealing with a certain material or group of materials purchased by through the purchasing organization.

The purchasing group is defined in configuration. The navigation path is **IMG · Materials Management · Purchasing · Create Purchasing Groups**.

The purchasing group is a three-character alphanumeric field and is entered along with a description, telephone and fax number.

In this chapter we have seen that knowledge of the SAP organizational structure is important to anyone working on an SAP implementation. Each company will create its own version of the SAP landscape, correction and transport and other technical elements. It is important that you understand what these are and how your company adopts them. Understanding the principle of the Materials Management structure is important to anybody working with the module, whether as a configurator or while advising a company on the organizational structure.

# Index

## A

- ABAP 25, 268
- ABC functionality 110
- ABC indicator 125, 126, 158
- absolute discount 231
- absolute limit 402
- absolute surcharge 231
- access sequence 100, 168, 169, 183, 185, 231
- account assignment 59, 247, 250, 282, 283, 284, 285, 287, 302
- account assignment category 247, 248, 250, 282
- account assignment group 100
- account code 137, 146, 282
- account document 360
- account group 49, 50, 51, 52, 53, 137, 146, 147, 207, 209, 213, 216, 219, 220
- account holder 144
- account number 155
- account payable department 395
- account postings 427
- account statement indicator 154
- account-assignment category 247
- accounting 43, 132, 137, 140, 141, 146, 150, 426
- accounting clerk 154, 155
- accounting data 49, 131
- accounting department 131, 132, 133, 137, 143, 144, 146, 148, 151, 152, 153, 154, 160, 220, 248
- accounting document 342, 360, 361, 362, 367, 376
- accounting element 366
- accounting entry 393
- accounting principle 342
- accounting requirements 100
- accounts 28, 282
- accounts payable 24, 137, 315
- accounts payable department 150, 410
- accounts-payment process 395
- acknowledgement 84, 157, 296
- action control 123, 124
- action keys 123
- actual costing 425, 426, 429
- actual costs 425, 431
- actual days' supply 320
- actual price 425
- actual value 92, 337
- adjustment 389
- Adobe Form Designer 268, 275
- advance ship notification 142, 294, 295
- advertising material 67
- agreement type 287, 291
- alpha factor 93, 338
- alternative BOM 122
- alternative payee 145, 160
- alternative source 227
- analytical methods 57
- annual reports 424
- annual seasonal pattern 334
- ANSI standard name 78
- APICS 327
- apparel 67
- application date 259
- application link enabling 201
- apportionment structure 204
- approvals 300
- archived purchasing documents 300
- archiving 182, 199, 200
- archiving program 182
- ASN 296
- assemblies 122, 128
- assembly operations 369
- assembly scrap 128
- asset accounts 147
- asset number 248
- assign multiple accounts 285
- assigning values 447
- associations 221, 222
- authorization 28
- authorization group 117, 147
- autocorrelation test 340
- automated export system 87
- automatic assignment of material number 44
- automatic batch determination 128
- automatic evaluated receipt Settlement 157
- automatic model selection 336

automatic payment transaction 150  
 automatic payments 145  
 automatic purchase order 83, 157  
 automatic release 409  
 automatic reorder point planning 328, 329  
 automatic reservations 351  
 automatically assign material numbers 44  
 availability check 96, 103, 121  
 available quantity 354  
 available stock 321, 329, 331, 351  
 average price 271

**B**

backflushing 123, 129, 361, 364, 365, 371  
 backflushing indicator 364  
 backflushing process 95  
 backward consumption period 120  
 balance sheet 28, 411, 416  
 balance sheet valuation 411  
 balance-sheet account 147  
 bank account 144  
 bank account number 144  
 bank control key 144  
 bank details 143  
 bank identification 143  
 bank key 143  
 bank-account 144  
 bank-routing number 143  
 bank-sort code 143  
 bar code 142  
 base layer 413, 414  
 base quantity 97, 104  
 base unit of measure 75, 82, 94, 95, 98, 112, 115, 116, 305  
 basic material 78  
 BASIS 182  
 batch 57, 58, 59, 80, 173, 174, 176, 177, 178, 179, 180, 181, 182, 186, 187, 341, 433, 439  
 batch certificate 57  
 batch control 173  
 batch creation 177  
 batch definition 173  
 batch deletion Flag 182  
 batch determination 176, 182, 183, 185, 186  
 batch determination access sequence 183  
 batch determination condition table 183  
 batch entry 128  
 batch information 58, 186, 187, 190  
 batch information cockpit 186  
 batch level 57, 58  
 batch management 22, 57, 62, 96, 173, 174, 190  
 batch number 57, 58, 60, 173, 174, 175, 176, 342, 358  
 batch number range 59  
 batch objects 177  
 batch of material 173, 174  
 batch record 103, 173, 175, 176, 177, 179, 181, 450  
 batch search procedure 185, 186  
 batch selection 185  
 batch split 185  
 batch status 59, 176  
 batch status indicator 176  
 batch status management 58, 59  
 batch strategy 183  
 batch strategy types 183, 184, 185  
 batch worklists 186  
 batches 57, 58, 59, 62, 80, 83, 103, 131, 173, 178, 185, 186, 187, 189, 385  
 batch-management indicator 174  
 batch-management requirement indicator 83  
 batch-relevant 174  
 batch-status management 58, 59  
 best practices 76, 151, 157, 221, 227, 456  
 best-of-breed 19  
 beta factor 338  
 beverages 67  
 BIC 186, 187, 189  
 BIC layout 187  
 bill of exchange 152, 153  
 bill of materials 66, 76, 121, 204, 243, 361, 363, 369  
 billing address 225  
 binding period 259  
 blanket purchase order 314, 315

- block 409
- Block a Purchase Order 281
- block an invoice 402
- block quantities 384
- blocked 404, 405, 406, 409
- blocked for payment 404
- blocked indicator 405
- blocked invoices 409, 410
- blocked status 217, 383
- blocked stock 176, 346, 347, 365, 366, 375, 379, 381
- blocking indicator 409
- blocking vendor 217
- BOM 122
- BOM characteristics 128
- book inventory 384, 388, 393
- book inventory balance 385
- book quantity 388, 389, 390
- BPICS 43
- bulk material indicator 129
- bulk materials 114, 129, 365
- bulk storage 114
- bulk storage indicator 114
- bulk storage placement strategy 114
- business address 139
- Business Information Warehouse 26
- buyer 225, 226, 231, 232, 249, 277
- buying groups 222
- by-product 352, 380, 381, 382

## C

- CAD 192
- CAD drawings 449
- calculation schema 156, 231
- calculation type 167
- canceling a purchase order 281
- capacity constraints 95
- capacity planning 96
- CAS Number for Pharmaceutical Products 88
- cash discounts 150, 231, 272
- cash management 147, 152
- cash outflow 152
- central purchasing organization 291
- centrally agreed contract 287, 291
- Certificate of Origin 88
- certificate types 118
- certification 143
- cGMP 57
- change document 117, 450
- change number 70, 192, 195, 450, 453
- change request 28
- changing a batch 181
- characteristic status 437
- characteristic values 79, 80, 178, 437, 444, 447, 448
- characteristics 57, 62, 77, 79, 80, 81, 91, 129, 173, 178, 185, 190, 301, 433, 434, 435, 436, 438, 439, 443, 444, 447, 455
- chart of accounts 29
- check digits 145
- check Flag for Double Invoices 152
- check-cashing time 152
- checking account 144
- chemical 62
- chemical industry 57, 64
- class 80, 81, 177, 185, 301, 434, 438, 439, 440, 442, 443, 444, 446, 447, 455
- class hierarchy 442, 443
- class name 447
- class structure 442
- class type 80, 81, 177, 301, 434, 439, 440, 441, 447, 455
- classification 75, 80, 81, 177, 266, 300, 301, 433, 434, 442, 443, 444, 448, 455
- classification data 65, 79
- classification method 300
- classification searches 178
- classification system 301, 433, 447, 448, 455
- classifying materials 444
- classifying objects 446
- clearing accounts 360
- client 25, 26, 27, 28, 275
- client dependent 27
- client level 57, 58
- client/server enterprise 19
- collective requirements 122
- collective slip 368
- commercial price 133
- commission group 99
- commodity code 87
- common agricultural policy 89
- communication fields 139
- companies 63, 173

company 28, 29, 39, 40, 41, 48, 57, 65, 76, 90, 118, 133, 137, 139, 140, 141, 143, 150, 174, 209, 221, 222, 228, 241, 255, 256, 266, 276, 303, 334, 341, 345, 366, 368, 371, 373, 375, 380, 423, 433, 434  
 company code 25, 28, 29, 32, 39, 40, 49, 51, 67, 133, 137, 146, 151, 356, 360, 402, 408, 412, 417, 421, 423  
 company policy 233  
 comparison value criteria 272  
 competitive bid 268  
 competitive products 67  
 component 122  
 component materials 430  
 component scrap 122, 128  
 component stock 122  
 composition 129  
 condition class 167  
 condition tables 168, 169, 183, 231  
 condition type 167, 168, 185, 231  
 conditions 40, 166, 167, 231, 232, 233, 270, 301, 308  
 configurable fields 67  
 configurable materials 66, 79  
 configuration 27, 28, 29, 32, 35, 41, 44, 49, 51, 52, 53, 58, 59, 61, 62, 63, 67, 73, 74, 75, 78, 83, 84, 96, 100, 101, 103, 105, 106, 109, 113, 114, 117, 118, 119, 120, 123, 124, 126, 128, 129, 130, 132, 142, 143, 148, 152, 160, 170, 175, 179, 187, 189, 207, 209, 220, 235, 236, 237, 238, 246, 256, 257, 261, 266, 282, 283, 284, 301, 303, 305, 345, 348, 355, 356, 365, 398, 405, 407, 408, 412, 413, 416, 417, 421, 425, 426, 436, 437, 440, 451, 453  
 configurator 237, 247, 248  
 configure 25  
 configured 142, 406  
 confirmation categories 295  
 confirmation control 296  
 confirmations 294  
 consignment 54, 161, 162, 247, 287, 430  
 consignment stock 383  
 consolidation 140, 425  
 constant forecast model 334, 340  
 constant mean value 334  
 constant model 336  
 Constant with Smoothing Factor Adjustment 336  
 consumables 66  
 consumption 91, 120, 315, 317, 318, 334, 338, 340, 352  
 consumption based planning 325  
 consumption by a cost center 282  
 consumption criteria 125  
 consumption data 328  
 consumption figures 91  
 consumption mode 120  
 consumption values 317  
 consumption-based planning 19, 244, 317, 320  
 contact address 160  
 container requirements 109  
 continuous inventory 383  
 contract 152, 161, 170, 222, 228, 230, 231, 267, 275, 286, 287, 288, 290, 291, 293, 294, 297, 298, 311  
 contract number 294  
 contracts 221, 232, 273, 286, 290, 291, 300  
 control key 106, 118  
 control quantity 115  
 Control Reason 345  
 control screen 140  
 controlling 425, 428  
 controlling area 104  
 conversation factor 121  
 conversion factor for planning Material 121  
 conversion factors 75  
 conversion of data 43  
 co-product indicator 129  
 co-products 129, 204  
 correction and transport system 26, 27  
 correspondence 153, 154  
 cost center 147, 247, 248, 253, 282, 352, 365, 366  
 cost object 247  
 costing 32, 202  
 costing data 134  
 costing department 134, 135  
 costing information 134  
 costing lot size 135  
 costing overhead group 135

- costing sheet 135
- count date 386
- count differences 393
- count document 384, 385, 386, 390
- count inventory 345
- count procedures 383
- counted quantity 388, 393
- counting 383
- counting error 393
- country 139
- country code 139, 143
- country key 30
- country of origin 88
- coverage profile 130
- creating a batch 175
- creative pricing 274
- critical part 86
- cross plant material status 76, 83
- cross-border account number 145
- cross-border payments 144
- cross-client 100, 183
- cross-project material indicator 121
- currencies 425, 431
- current assets 411
- current Good Manufacturing Procedures 57
- current liabilities 411
- current stock 323
- customer 23, 33, 43, 44, 45, 48, 52, 53, 55, 59, 60, 63, 66, 67, 76, 85, 86, 90, 101, 140, 147, 153, 159, 160, 161, 162, 190, 241, 276, 277, 286, 290, 327, 341, 342, 346, 395, 398, 399, 411
- customer delivery 341
- customer locations 383
- customer material number 76
- customer number 140
- Customer Relationship Management 26
- customer satisfaction 172
- customer service 341, 384
- customer service levels 383
- customized reports 300
- customizing 26, 27
- cycle count indicator 109
- cycle counting 109, 110, 346, 383
- cyclic elements 338

## D

- dangerous goods 78
- data conversion 63
- data type 435
- data-rationalization 63
- date of delivery 245
- date variance 402
- days of inventory 24
- days of Working Capital 24
- days payables outstanding 24
- days Sales Outstanding 24
- deadline monitoring 84
- default supply area 129
- deleting a batch 182
- deletion flag 182, 200
- deletion indicator 238, 264, 353, 354, 355, 356
- delivering plant 99
- delivery 67, 375, 382
- delivery address 277
- delivery block 218
- delivery costs 233, 272
- delivery date 23, 85, 244, 246, 250, 253, 257, 260, 264, 277, 295, 296
- delivery note 375, 395
- delivery of goods 295
- delivery quantity 101, 375
- delivery schedule 87, 229
- delivery tolerances 54
- delivery unit 101
- delivery-note number 347
- delta factor 338
- dependant requirements 317
- dependencies 443
- dependency 444
- dependency editor 444
- dependent requirements 122
- deployment strategy 130
- design document 79
- design office 76
- detailed planning 204
- determination of lowest price 133
- determine effective price 272
- devaluating materials 421
- devaluation indicator 133
- devaluation percentage 133, 421, 423
- devalued 423
- dewey decimal 433

difference quantity 390  
difference value 390  
differences 427  
dimensions 78  
discontinuation indicator 122  
discontinued 122  
discontinued material 123  
discontinued Parts 122  
discount in kind 83, 159  
discounts 24, 167, 231, 232, 254, 270,  
272, 308  
distribution center 359  
distribution channel 72, 76, 99  
distribution requirements planning 130  
divisions 76  
DMS 79, 179, 180, 449, 450, 454, 455,  
456  
document 79, 449, 450, 451, 453, 455,  
456  
document chapter 79  
document date 267  
document index 158  
document information record 449, 450  
document management 449, 454, 456  
document management for batches  
179  
document management system 79,  
179, 449, 456  
document number 257, 449, 452  
document parking 400  
document part 180, 451, 452  
document record 452, 453, 455  
document required indicator 117  
document status 451, 452  
document type 79, 179, 180, 246, 247,  
256, 298, 314, 450, 452, 453  
document version 79, 451  
downward trend 334  
drugs controller general of India 174  
dunning 49, 153, 154  
dunning block 154  
dunning clerk 154  
dunning notices 154  
dunning procedure 153, 154  
dunning run 154  
duplicate records 63  
duty levied 272  
duty payments 233

dynamic profile 101  
dynamic safety stock 130

## E

EAN 78, 159  
economic justification 227  
EDI 23, 142, 153, 157, 224, 226, 280, 281,  
294, 295, 297, 341  
EDI transaction set 224  
Effective-out Date 123  
electronic date interchange 395  
electronic signatures 300  
email 280, 294  
email address 139  
employees 434  
employer identification number 141  
empties 66, 67  
empty storage bins 115  
end user 447  
engineering change 195  
engineering change management 22,  
70, 191, 206  
engineering change number 192, 193,  
205  
engineering change record 205  
engineering drawings 179, 450, 451  
EnjoySAP 245, 246, 277, 278  
enterprise buyer professional 26  
Environment, Health and Safety 22, 78  
environmentally relevant 79  
Equal Opportunity Act 273  
equipment 60, 61, 62, 64, 66, 95, 96,  
104, 244, 448  
equipment category 61  
ERP 19  
ERS 399  
ERS indicator 399  
European Article Number 78, 454  
evaluated receipt process 398, 399  
evaluated receipt settlement 157, 395,  
399  
evaluated settlement 398  
evidence of internal controls 449  
exception messages 320  
exchange rate differences 425, 428,  
429  
exemption certificate 89, 149  
expected delivery 354

expected value 310  
expiring stock 190  
expiry date 365, 416  
export/import group 87  
export-certification 89  
external assignment 256  
external categories 295  
external confirmation 295, 296  
external confirmation category 296  
external documents 300, 449, 452  
external file name 449  
external model 336  
external number assignment 46, 137, 146  
external number range 207, 246  
external tax system 139  
externally assigned 452  
EXTRASTAT 87

## F

factory calendar 30, 319  
fair share rules 130  
fast-moving stock 383  
fax numbers 139  
FDA 174, 175  
field groups 51  
field reference 64  
field selection group 55, 56  
field status 51  
FIFO 134, 416, 417, 424  
FIFO valuation 417, 418  
final assembly 121  
final entry indicator 313  
final indicator 355  
final issue 353  
finance department 404  
financial accounting 49, 100, 140, 143, 215, 345, 398, 428  
financial flow 21, 24  
financial movements 367, 376  
financial posting 361  
financial statement 411  
Financials 29  
finding objects 447  
finished goods 65, 66, 95, 174, 327, 361, 377, 380, 381, 383, 384, 411  
finished material 122  
finished product 191, 364, 365, 381  
first in, first out 134  
fiscal year 91  
Fiscal Year Variant 91  
fixed agreement 325  
fixed assets 411  
Fixed Lot Size 127  
fixed source 228  
fixed-period 337  
flag for deletion 197, 385  
float 97  
float after production 97  
float time 109  
follow-up material 123  
Food, Drug and Cosmetic Act 174  
forecast 73, 87, 90, 91, 92, 93, 119, 126, 129, 317, 328, 329, 330, 331, 333, 337, 338, 340  
forecast based planning 119  
forecast calculation 92, 337  
forecast initialization 92, 337  
forecast model 91, 93, 331, 333, 334, 336, 337, 338, 339, 340  
forecast modeling 333  
forecast parameters 335  
forecast periods 119  
forecast profile 73, 90, 335, 338  
forecast requirements 119, 329, 331  
forecast schedules 87  
forecast screen 340  
forecast value 92, 329, 337  
Forecast-based planning 327, 329  
forecasting 72, 73, 90, 91, 130, 317, 333, 334, 340  
forecasting data 90  
forecasting methods 340  
forecasting model 93  
foreign trade 158  
foreign trade data 87  
foreign vendors 149  
formula field 305  
formula key 305  
forward consumption 120  
forward consumption period 120  
forwarding agents 83, 142, 143  
framework 433  
free delivery of goods 430  
free goods 380, 382  
free of charge 67, 159, 382

freeze book inventory indicator 385  
freight charges 233  
freight costs 142, 143, 231, 232, 270, 272  
freight forwarders 142  
freight groups 83, 142  
funds section 411  
future Price 133  
future requirements 329

## G

G/L account number 248  
G/L accounts 132, 282  
gamma factor 94, 338  
general ledger 132, 147, 369, 373, 382  
general ledger accounts 247, 305, 398  
general-item category group 77  
general-ledger account 147  
Global Location Number 141  
good receipt-based invoice verification 157  
goods issue 38, 104, 345, 360, 361, 362, 363, 364, 365, 366, 367, 368, 369, 371, 393  
goods issue for sampling 366  
goods issue posting 367  
goods issue reversal 368, 369  
goods issue slip 367, 368  
goods issue to production 371  
goods movement 35, 36, 114, 132, 341, 342, 345, 348, 352, 353, 354, 355, 356, 360, 385, 425, 430  
goods receipt 38, 59, 96, 104, 111, 118, 123, 218, 235, 281, 282, 311, 345, 346, 347, 350, 352, 373, 375, 376, 377, 379, 380, 381, 382, 384, 393, 395, 398, 402, 409, 419, 429  
goods receipt documents 110  
goods receipt inspection 117  
goods receipt note 376, 377  
goods receipt reversal 377  
goods receipt slip 110  
goods receiving 19  
goods-receipt blocked stock 346  
goods-receipt document 226  
government 226  
government regulations 222  
gross Price 231  
gross requirements planning 121

group counter 135  
group key 141  
group task lists 135  
grouping keys 105

## H

handling requirements 104  
handling unit management 22  
hazardous material number 109  
head-office 147  
hierarchical material structure 76  
HIPAA 449  
historical material consumption 329  
historical periods 92, 337  
historical values 337  
holding company 27  
house bank 152

## I

IBAN 144, 145  
IDoc 201  
IMG 29, 39, 100, 113, 167, 169, 183, 187, 218, 256, 298, 301, 303, 319, 407, 449, 450  
immediate payment 152  
implementation 41, 43, 57, 63, 200, 431  
inbound delivery 294, 295  
income tax 149  
incomplete status 178  
incorrect material 346  
Incoterms 156  
independent requirements 130  
indirect purchase requisition 244  
individual goods receipt note 377  
individual payment indicator 152  
individual slip 368  
Individual slip with inspection text 368  
industry key 142  
industry sector 63, 64, 70, 72  
information flow 21, 23  
inheritance 443  
inherited characteristics 443  
in-house production 69, 244, 373  
in-house production time 97, 121  
initial Batch Status 59  
initial Entry of Inventory 379  
initial status 59

- initial stock creation 345
- Input Tax 231
- inspection Interval 117
- inspection lots 117
- inspection memo 78
- inspection setup 117
- inspection stock 117
- inspection text 454
- inspection type 117
- instance 25
- interest calculation 146
- interim storage area 129
- interim storage types 38, 115
- internal confirmation 295
- internal confirmation category 296
- internal document 300
- internal number assignment 452
- internal numbering 303
- internal transfer 342
- internally assigned 257
- International Bank Account Number 144
- International Chamber of Commerce 156
- Internet 221
- interoperation 97
- interoperation time 97
- INTRASTAT 87
- inventory 67, 104, 135, 344, 345, 347, 348, 350, 352, 354, 355, 365, 366, 373, 379, 383, 384, 388, 390, 416
- inventory accuracy 346
- inventory adjustments 384
- inventory balance 385, 393
- inventory control 377
- inventory costs 383
- inventory count 384, 385, 387
- inventory count sheet 387
- inventory department 363
- inventory differences 385, 389, 390, 393
- inventory document 390
- Inventory inaccuracies 383, 384
- Inventory Management 43, 107, 114, 183, 317, 341, 342, 360, 393, 427, 428
- inventory movements 341
- inventory records 425
- inventory sampling 383

- inventory status 384
- inventory turns 24
- inventory variance report 383
- invoice 118, 151, 155, 157, 172, 226, 282, 315, 395, 397, 398, 400, 401, 402, 404, 405, 408, 409, 410
- invoice amount 404
- invoice date 397
- invoice prices 133
- invoice receipt 247, 429
- Invoice Verification 24, 43, 49, 54, 395, 399, 410, 427, 428
- invoices 24, 397, 399, 407, 409, 410, 419, 456
- invoicing 137
- inward goods movement 35
- ISO 78, 449
- ISO certification 143
- issuing material to scrap 371
- issuing storage location 95
- item category 247, 253, 257, 260, 279, 284, 310, 314
- item category group 77
- item number 228, 277
- item type 77

## J

- JDEdwards 43
- JetForm 275
- JIT Delivery Schedule 129
- just-in-time 87, 341, 382

## K

- KANBAN 129
- KANBAN containers 64
- key performance indicators 24
- keywords 439

## L

- label form 110
- label type 110
- labels 110
- laboratory 76
- last in, first out 134
- Lawson 43
- layer quantities 414
- layer value 414
- layers 413

leading zeros 45  
 leading-zeros indicator 46  
 lean W/M 108  
 legacy 43, 44, 63, 76, 135  
 legacy data 63  
 legacy numbering 44  
 legacy system 48, 63, 379  
 legal control 89  
 legal dunning procedure 154  
 legal entity 25  
 legal jurisdiction 277  
 lexicographical indicator 45, 46  
 LIFO 134, 411, 412, 413, 414, 416, 424  
 LIFO method 415  
 LIFO pool 134  
 LIFO relevant 134  
 LIFO valuation 411, 412, 413, 414, 415, 416  
 linked documents 179  
 loading group 103  
 loading requirements 103  
 logistics 20, 21, 22, 23, 24  
 logistics handling group 104  
 Logistics Information System 23, 99  
 long-term agreement 286  
 long-term forecast 341  
 lot- for-lot 330  
 lot size 122, 127, 135, 204, 330, 331  
 lot size calculation 127  
 lot size data 127  
 lot-for-lot sizing 331  
 lot-size calculation 127, 128, 320  
 lot-size key 127  
 lot-size procedures 127, 330  
 lower tolerances 404  
 lowest mean absolute deviation 340  
 lowest price quotation 272  
 lowest value 419  
 lowest value determination 419, 424  
 lowest value principle 419  
 LVP 419

**M**

machines 96  
 maintenance 65  
 maintenance assembly 65  
 maintenance order 106, 107, 243, 244  
 manual batch determination 128  
 manual block 404, 405  
 manual block indicator 405  
 manual initialization 337  
 manual reorder-point planning 327  
 manual reservation 351, 354  
 manufactured 65  
 manufactured product 129  
 manufacturer 89, 90, 175  
 manufacturer part number 89  
 manufacturer parts 65  
 manufacturing 327, 360, 371, 377, 382  
 manufacturing operation 381  
 manufacturing process 173, 381  
 market prices 419  
 master data 63  
 master data files 43  
 master production scheduling 317  
 master record 449  
 matchcode 143, 180, 263, 264, 447  
 Material 70, 222, 346, 357, 360, 365  
 material 32, 33, 40, 43, 54, 57, 58, 63, 64, 65, 69, 74, 75, 76, 78, 79, 80, 81, 82, 87, 88, 91, 94, 95, 96, 97, 98, 102, 103, 104, 109, 111, 112, 113, 114, 115, 116, 117, 118, 119, 121, 122, 125, 126, 129, 132, 133, 134, 135, 137, 148, 153, 157, 158, 160, 161, 162, 163, 164, 165, 172, 173, 174, 176, 187, 190, 191, 192, 194, 195, 196, 197, 202, 205, 217, 218, 219, 220, 221, 222, 225, 226, 227, 228, 229, 230, 231, 233, 240, 241, 243, 246, 249, 250, 254, 255, 258, 262, 270, 271, 273, 274, 276, 279, 280, 281, 285, 290, 291, 293, 302, 303, 317, 318, 320, 321, 322, 324, 325, 327, 328, 329, 330, 334, 338, 340, 341, 345, 346, 347, 348, 349, 350, 351, 353, 354, 357, 358, 359, 360, 363, 365, 366, 367, 369, 373, 375, 376, 377, 380, 382, 384, 386, 388, 389, 411, 416, 419, 422, 425, 426, 428, 429, 430, 431, 433, 434, 439, 444  
 material accounts 369  
 material authorization group 117  
 material balances 411  
 material counts 387  
 material defect 346  
 material description 74, 192  
 material discrepancies 389

material document 110, 176, 342, 343, 347, 349, 350, 361, 367, 368, 369, 376  
 material flow 21, 22  
 material freight group 83  
 material group 47, 54, 75, 76, 102, 159, 161, 163, 164, 240, 246, 250, 253, 258, 260  
 material group hierarchy 76  
 material issue 367  
 material ledger 132, 425, 426, 427, 428, 430, 431  
 material ledger indicator 426  
 material level 58  
 material master 43, 44, 46, 47, 63, 64, 70, 71, 72, 73, 74, 79, 81, 84, 90, 95, 98, 102, 104, 105, 106, 110, 111, 116, 119, 131, 133, 134, 135, 165, 191, 193, 197, 199, 200, 201, 202, 205, 206, 245, 250, 303, 305, 317, 321, 330, 335, 340, 413, 431, 434, 444, 446, 453  
 material master fields 135  
 material master record 70, 72, 137, 174, 250, 317, 327, 330, 335, 364, 368, 426, 429, 453, 454  
 material master screens 81  
 material movement 132, 342, 343, 361, 384  
 material number 44, 45, 46, 52, 54, 70, 72, 75, 159, 193, 245, 260, 277, 303, 317, 342, 362  
 material number ranges 46  
 material numbering 44  
 material posting 174  
 material price 399, 419  
 material price analysis 428  
 material price determination 427, 428  
 material pricing group 100  
 material receipt 376  
 material requirements 244, 317, 333  
 material shortage 129  
 material statistics group 99  
 material status 76, 83, 341  
 material stock 133, 384  
 material type 46, 47, 59, 64, 65, 66, 67, 69, 70, 71, 72, 81, 90, 132, 133, 191, 303, 413, 419, 421, 426  
 material type changes 69  
 material valuation 424, 426  
 material value 132, 411  
 material value changes 413  
 material/service group 305  
 material-description policy 75  
 material-requirements planning 327  
 materials 46, 47, 48, 57, 64, 65, 66, 67, 75, 76, 77, 79, 80, 83, 99, 118, 125, 132, 135, 159, 174, 187, 279, 286, 291, 341, 346, 361, 364, 369, 373, 375, 382, 383, 388, 390, 395, 398, 399, 413, 414, 417, 418, 425, 427, 429, 430, 431, 433, 448, 451  
 materials deployment 130  
 Materials Management 19, 24, 25, 33, 36, 39, 41, 43, 61, 182, 183, 184, 200, 207, 220, 302, 360, 361, 371, 425, 431, 444  
 Materials management 331  
 Materials Management module 47  
 materials requirements planning 72, 331, 361  
 materials-dependent requirements 122  
 Maximum Bin Quantity 115  
 maximum lot size 127  
 Maximum Storage Period 110  
 mean absolute deviation 93, 338  
 mean price 272  
 mean value 334  
 Mean Value Quotation 271, 273  
 meaningful material numbering 44  
 Mechanical Engineering 64  
 Medicines and Healthcare Products Regulatory Agency 174  
 Message Creation 298  
 message log 397, 398  
 message output 302  
 message queue 297  
 messages 397  
 Minimum Bin Quantity 115  
 Minimum Lot Size 127  
 Minimum Order Quantity 100  
 minimum quantity 101  
 minimum remaining shelf-life 111  
 Minimum Safety Stock 130  
 Minimum Value Quotation 272  
 minority owned 273, 434  
 minority vendor 148

- minority-indicator 148
- miscellaneous goods receipt 380
- mixed MRP 121
- mode of transport 158
- model selection field 93, 337
- monitoring confirmations 300
- monthly consumption 317
- Move time 97
- movement indicator 352, 355, 356
- movement rate 422, 423
- movement type 111, 123, 183, 342, 343, 344, 345, 347, 348, 349, 350, 351, 352, 357, 358, 359, 360, 361, 363, 365, 369, 375, 379, 381, 382, 413, 417
- movements 133
- Moving Average Model (G) 336
- moving average price 132, 369, 430, 431
- moving price 132
- moving-average price control 431
- MPN 89, 90
- MRP 22, 23, 72, 87, 119, 122, 202, 205, 228, 229, 230, 243, 317, 327, 329, 351, 352, 353
- MRP area 364
- MRP controller 127, 193, 195, 244, 251, 322, 325
- MRP Dependent Requirements 122
- MRP fields 321
- MRP group 125
- MRP Indicator 321
- MRP key 73
- MRP list 322, 323, 324, 353
- MRP parameters 126
- MRP profile 72, 73
- MRP requirements 130
- MRP type 126, 127, 193, 329, 330, 331
- MSDS 79, 453
- MSDS files 449
- multi-level price determination 429, 430
- multinational groups 425
- multiple account 285
- multiple account assignment 285
- multiplier field 91

## N

- national account number 145
- National Motor Freight Traffic Association 142
- negative seasonal trend 334
- negative stock 104
- Negative Stock in Plant 104
- negotiated price 225
- negotiating 221
- net price 54
- net requirement quantity 320
- net-price field 270
- net-requirements calculation 320
- network 244, 352, 449
- non-batch managed 174
- non-food items 67
- non-moving item 133
- non-stock 66
- non-stock item 54, 243
- non-stock material 54, 66, 244
- non-valuated material 66
- non-variant parts 121
- non-working day 319
- number assignment 257, 449
- number of sheets 79
- number range 46, 47, 52, 53, 54, 55, 59, 207, 208, 209, 213
- numeric material numbers 45

## O

- object 65, 171, 434, 440, 441, 446, 447, 448, 449, 453, 454
- object dependency 443, 444
- object types 440
- objects 80, 147, 158, 178, 433, 439, 443, 444, 446, 447, 448, 449, 455
- obsolete 334
- occupational categories 433
- office of entry 158
- offsetting adjustment 389
- old material number 76
- one-step procedure 356, 357, 358, 359
- one-step removal 114
- one-time vendor 50, 218, 219
- on-time delivery 236
- on-time performance 224
- operating supplies 65

- operation 54, 97, 129, 243, 244, 317, 364, 365
- operation time 365
- operations 63, 65, 97, 243, 244, 383, 384
- optimization level 338
- optimum lot-sizing procedure 128
- order 157
- order accuracy 95
- order acknowledgement 294, 295, 296
- order currency 156
- order price quantity variance 401
- order settlement 427
- order type 96, 278
- order unit 82
- ordering address 160
- ordering costs 128
- order-to-delivery 341
- organization 43, 399, 456
- organization level 72, 74, 90, 317
- organizational structure 27, 29, 33, 35, 41
- origin group 135
- out of tolerance 174
- outline agreement 228, 230, 231, 232
- outline purchase agreement 286
- outline purchase agreement types 286
- output format 298
- output message 297
- outside processing 75
- outstanding purchase orders 83
- overall limit 310
- overall trend 334
- over-delivery 85, 346
- over-delivery tolerance 85
- overhead and material costs 135
- overhead costs 135

## P

- packaging 67, 110
- packaging material 67, 79
- packaging material group 79
- packaging requirements 85
- page format 79
- page number 79
- palletization 113
- pallets 113
- parked 400, 401

- parked status 400
- parking an invoice 401
- part numbers 65
- partial goods receipt 281
- partial quantity 379
- Partner Bank Type 145
- partner functions 49, 159, 160
- payment block 152
- payment instructions 143
- payment methods 49, 152
- payment periods 150
- payment process 398
- payment program 398
- payment rules 398
- payment slips 142
- payment terms 49, 150, 151
- payment transaction 143
- payment-block keys 152
- P-card 24
- percentage assignment 285
- Percentage Basis 272
- percentage discount 421, 423
- percentage limit 402
- percentage value 404
- performance capability 273
- period 425, 428, 429
- period indicator 91, 111, 317
- periodic unit price 425
- perishables 67
- personnel number 150
- pharmaceutical 62, 64, 173
- pharmaceutical company 174
- pharmaceutical industry 57, 174
- physical count 387, 388, 390
- physical count document 388, 390, 391
- physical document number 390
- Physical inventory 67, 109, 110, 345, 346, 382, 383, 384, 386, 387, 389, 393
- Physical inventory account 393
- Physical inventory count 384
- Physical inventory count sheets 384, 386, 387
- Physical inventory document 388, 390
- physical stock 104
- picking 33, 36, 108, 115
- picking area 108

- picking quantities 116
- Picking Storage Type 112
- picking ticket 367
- pipeline 54, 66, 161, 162, 173
- pipeline handling 69
- pipeline material 66
- placement 36
- placement strategies 33, 113, 114
- planned count 109
- planned delivery date 85
- planned delivery times 121
- Planned Goods Issue 361
- planned movement 351, 352
- planned order 87, 96, 123, 129, 244, 320, 324, 325
- Planned order reduction 123
- planned production 329, 331
- planned purchases 67, 329, 331
- planned requirements 120, 330
- planner 320
- planning 337, 433
- planning areas 204
- planning calendar 126, 318, 319
- planning cycle 126, 330
- planning department 121, 123, 126, 127, 130, 229, 244, 295
- planning file 320
- planning function 119
- planning group 147
- planning material 121
- planning method 317
- planning plant 121
- planning procedure 330
- planning process 320, 321, 324, 325
- planning results 322
- planning run 119, 127, 244, 320, 322, 331
- planning strategies 120, 121
- Planning Time Fence 126
- planning types 204
- plant 25, 30, 32, 33, 34, 35, 40, 43, 57, 58, 59, 67, 72, 74, 79, 95, 102, 105, 111, 113, 116, 117, 118, 119, 128, 192, 193, 198, 200, 202, 205, 227, 228, 230, 231, 243, 245, 246, 249, 250, 279, 281, 291, 319, 320, 341, 342, 351, 355, 356, 357, 358, 359, 371, 383, 386, 400, 405, 419, 421, 428
- Plant Engineering 64
- plant equipment 65, 67
- plant level 57, 58, 59, 88, 202
- plant maintenance 60, 61, 62, 65, 67, 89, 243, 320
- plant maintenance department 105, 106
- plant stock 375
- plant stock levels 321, 377
- plant transfer 359
- plants 58, 94, 108, 176, 291, 359, 383, 413
- Plant-Specific Material Status 83
- points 165, 238
- positive seasonal trend 334
- positive variance 411
- Post to Inspection Stock 86
- postal code 139
- posting block 384, 387
- posting block indicator 384
- posting date 390, 397
- posting differences 38
- posting movement type 391
- posting periods 91
- posting the invoice 401
- post-office boxes 139
- Precondition 444
- preference status 88
- price calculation schema 167
- price comparison 270, 271, 272, 273
- price control 132
- price control indicator 133
- price determination 77, 83, 233, 429, 430, 431
- Price Differences 428, 429
- price discounts 272
- price fluctuation 425, 431
- Price Unit 132
- price value 404
- Price Variance 399, 401, 402, 408
- pricing 167, 395
- pricing agreement 232
- pricing conditions 100, 183, 232
- pricing determination 157
- pricing procedure 99, 142, 143, 156, 167
- pricing scale 232
- pricing-date category 157
- process order 96, 103, 183
- processing time 97, 104, 338

procurement 23, 43, 118, 127, 128, 327  
 procurement costs 272  
 procurement cycle 118  
 procurement proposal 320, 321, 324,  
 329, 330, 331  
 Procurement Type 128  
 PRODCOM Number for Foreign Trade  
 88  
 product 340  
 product attribute 102  
 product cost estimate 135  
 product hierarchy 77  
 product recall 57, 174, 176, 190, 346  
 product/inspection field 78  
 production 58, 60, 65, 66, 89, 92, 95,  
 119, 123, 129, 197, 220, 286, 320, 325,  
 331, 337, 351, 360, 361, 365, 369, 373,  
 379, 380, 382, 384, 425  
 Production Date 111, 176  
 production delays 97  
 production department 127  
 production Order 87  
 production order 22, 54, 96, 97, 128,  
 129, 135, 183, 243, 248, 345, 351, 361,  
 362, 363, 364, 365, 367, 369, 373,  
 377, 379, 380, 381  
 production order number 362, 377  
 Production Order Settlement 428  
 production orders 23, 75, 127, 361, 377,  
 380, 393  
 production plan 95  
 Production Planning 22, 32, 76, 182,  
 325, 331, 371, 380  
 production process 66, 95, 128, 129,  
 135, 174, 302, 345, 363, 365  
 Production Resources and Tools 105  
 Production Resources/Tools 65  
 production run 96  
 production schedule 23, 95, 97, 295,  
 389  
 production scheduling profile 95, 96  
 Production Storage Location 95, 129  
 production unit 95  
 production unit of measure 95  
 production version 122, 202, 203, 204  
 production-planning 30  
 profile description 60  
 profit center 104  
 Profit center accounting 104  
 project 248, 275, 351  
 project schedules 95  
 project segment 121  
 project stock 121, 132  
 Project Systems 22, 244  
 promotional items 382  
 promotional price 157  
 PRT 105, 106  
 public safety 174  
 purchase department 286  
 purchase document 301  
 purchase group 279  
 purchase information record 54, 55,  
 75, 84, 161, 399  
 purchase line-item 278  
 purchase order 54, 82, 83, 85, 86, 87,  
 117, 118, 142, 153, 156, 157, 159, 170,  
 171, 217, 218, 219, 225, 226, 228, 231,  
 232, 233, 244, 253, 255, 265, 267, 273,  
 277, 278, 279, 280, 281, 282, 284, 285,  
 286, 290, 293, 294, 296, 297, 298,  
 300, 301, 302, 306, 310, 311, 312, 313,  
 314, 315, 325, 330, 345, 347, 349, 352,  
 354, 373, 375, 380, 382, 395, 397,  
 398, 399, 402, 419, 429, 430  
 Purchase Order Acknowledgement  
 295  
 purchase order creation 295  
 purchase order line item 281  
 purchase order number 225, 277, 279,  
 312, 375, 380, 397  
 purchase order text 169  
 purchase organization 218  
 purchase price 231  
 purchase requisition 83, 87, 157, 221,  
 222, 243, 244, 245, 246, 247, 249, 250,  
 251, 252, 253, 254, 255, 265, 277, 287,  
 289, 300, 301, 320, 323, 324, 325  
 purchasing 19, 39, 43, 49, 65, 75, 81,  
 83, 86, 137, 139, 140, 159, 174, 320,  
 325, 456  
 purchasing conditions 83  
 purchasing consultants 221  
 purchasing costs 128  
 purchasing data 65, 155

purchasing department 85, 86, 137, 139, 151, 156, 157, 158, 159, 160, 220, 221, 222, 224, 225, 226, 227, 232, 233, 237, 239, 244, 251, 254, 255, 257, 261, 267, 268, 269, 270, 273, 274, 275, 276, 277, 280, 281, 286, 288, 290, 291, 315, 324, 325, 348, 382  
 purchasing document category 267  
 purchasing documents 69, 84, 156, 158, 301, 302  
 purchasing function 300  
 purchasing group 41, 54, 246, 249, 250, 257, 267, 287  
 purchasing information 65, 118  
 purchasing information record 54, 55, 56, 161, 162, 163, 164, 165, 166, 167, 169, 170, 171, 219, 230, 232, 419  
 purchasing order unit of measure 82  
 purchasing organization 39, 40, 41, 49, 54, 137, 162, 163, 165, 209, 210, 214, 216, 217, 218, 227, 231, 236, 237, 238, 239, 240, 257, 267, 271, 273, 287, 291, 300  
 purchasing output 298, 302  
 Purchasing process 399  
 Purchasing requisition 221, 243, 244, 247  
 purchasing value key 83  
 Push Indicator 131

**Q**

Qualify for Free Goods Discount 83  
 quality 222, 224, 235  
 quality assurance 118, 174  
 quality certificate 118  
 quality control 174  
 quality department 117, 118, 176, 177, 366  
 quality information 117  
 quality inspection 86, 117, 176, 347, 356, 377, 379, 381, 383, 384, 409  
 quality inspection stock 365  
 quality inspection text 368  
 quality inspection user 117  
 quality inspection worklists 179  
 Quality Management 22, 116, 117, 118, 143, 206  
 quality notifications 117

quality performance 224  
 quality requirements 116  
 quality testing 180  
 quality testing document 179  
 quantity and price variance 401  
 quantity assignment 285  
 quantity basis 65, 69  
 quantity contract 290, 291  
 quantity formula 106  
 quantity structure data 135  
 quantity variance 401, 408  
 queue time 97  
 quota arrangement 86, 87, 230  
 quota arrangement usage key 86  
 quotation 222, 224, 232, 257, 259, 269, 270, 271, 273, 274, 275, 276, 287, 289  
 quotation comparison 272  
 quotation deadline 259, 264

**R**

R/2 19  
 rail transportation companies 83  
 random block 405  
 random variation 338  
 range of coverage 130, 419, 421  
 range of coverage value 421  
 range of values 434  
 rate-based planning 204  
 raw material 65, 66, 69, 71, 81, 129, 221, 382, 383, 411  
 real time 341  
 real-time reports 341  
 reason code 261, 391  
 reason for movement 348, 349, 365  
 rebate 165  
 rebate arrangement 165  
 rebate-agreement processing 99  
 recall 174, 175  
 recall product 174  
 receipt days' supply 320  
 receipt of material 373  
 receiving dock 249  
 receiving plant 58, 360  
 recipes 179  
 recipient type field 149  
 reconcile 147  
 reconciliation 147  
 reconciliation account 49, 147

reconciliation account type 147  
 recount 389, 390  
 recount document 390  
 recycling 346  
 redundant records 63  
 re-engineering 341  
 reference material 91  
 reference plant 91  
 reference quotation 271  
 region 139  
 region code 30  
 region of origin 88  
 regression analysis 340  
 regulations 173  
 regulatory bodies 174  
 rejection letter 275  
 rejection notice 275  
 rejection of RFQ 298  
 release 20, 290  
 release code 266, 301  
 release condition 301  
 release for payment 147  
 release group 147, 266, 301  
 release indicator 301  
 release manually 410  
 release of purchase requisitions 301  
 release orders 286, 290, 291, 293, 294  
 release policy 302  
 release procedure 265, 266, 300  
 release status 178  
 release strategy 266, 301, 302, 310  
 released 178  
 relevant for backflushing 364  
 relevant tax classification 100  
 reminder days 83  
 reminder letters 153  
 reminders 84  
 reminding vendors 153  
 removal strategy 113  
 reorder level 321, 328, 329  
 reorder point 126, 317, 327  
 reorder point planning 126, 327, 329  
 reorder points 331  
 reorder quantity 127  
 repairs 320  
 repetitive manufacturing 104, 123, 203, 204, 286  
 repetitive manufacturing indicator 123  
 repetitive manufacturing profile 123  
 replacement part 103  
 replenishment quantity 116, 321  
 request for information 226  
 request for quotation 137, 218, 222, 255, 263, 265, 267, 268, 300  
 requestor 302  
 requirement for confirmations 295  
 requirement quantity 320  
 requirement tracking number 252, 258, 264  
 requirements situation 323  
 requisition 289  
 requisitioner 222, 226, 227, 243, 244, 245, 246, 249, 250, 251, 252, 253  
 reservation 351, 352, 353, 354, 355, 356, 361, 369, 370  
 reservations 69, 354, 360  
 reserve the stock 351, 369  
 retention days 355, 356  
 retention period 356  
 return 345, 346, 347, 348, 349  
 return agreement 165  
 return delivery 346, 347, 350  
 return material 346  
 return material authorization 346  
 return policy 273  
 return process 360  
 returnable packaging 66  
 returnable packaging material 346  
 returnable transport packaging 66  
 returns 197, 346, 350, 360  
 returns vendor 158  
 reusable packaging 66  
 reevaluate 425  
 reevaluate stock 425  
 revaluation 159, 428  
 reverse logistics 346  
 reverse movement type 358  
 revision level 205, 206, 450  
 revision level assignment 450  
 revision number 205  
 RFQ 170, 224, 227, 255, 256, 257, 258, 259, 262, 263, 264, 266, 267, 268, 269, 270, 273, 274, 275, 298, 300, 306  
 RFQ delivery schedule 260  
 RFQ document number 257  
 RFQ number 263, 264, 271

- RFQ type 256
- right-justified 45
- rough goods receipt 295
- rough-cut planning 112, 204
- rounding errors 132
- rounding profile 101
- rounding quantities 101
- rounding quantity 116
- rounding rule 111
- route-scheduling function 103
- routing 243, 364

**S**

- safety data sheet 79
- safety stock 129, 130, 327
- safety stock level 323, 328, 329
- safety stock range 130
- safety time 130
- safety time indicator 130
- safety-data shipping 79
- Sales and Distribution 22, 72, 77, 83, 182, 183, 206
- sales billing documents 100
- sales departments 102, 103
- sales document 77
- sales general data 102
- sales information 65, 97
- sales order 99, 248, 282, 352, 384, 393
- sales order stock 132
- sales organization 43, 72, 74, 97, 98, 100, 101, 102, 198, 200
- sales structure 76
- sales unit of measure 98
- sample 366
- sample products 382
- sampling 345, 361, 366
- sampling account 366
- SAP Early Watch 26
- SAP queries 300
- SAP retail 67, 99
- SAPScript 268
- Sarbanes-Oxley Act 449
- scale 167, 232, 309
- schedule lines 320, 324, 325
- Schedule Manager 398
- Schedule Variance 408
- scheduled date. 408
- scheduled deliveries 331
- Scheduling 320
- scheduling agreement 87, 228, 229, 232, 267, 286, 287, 288, 289, 290, 291, 298, 300, 325, 419
- scheduling agreement number 287
- schema group 156
- scope of list 266
- scoring criteria 239
- scoring method 236
- scoring methods 236
- scoring system 239
- scrap 128, 140, 365, 366, 371
- Scrap material 365
- scrap quantities 364, 365
- scrapping 345, 361, 365
- scrapping account 365
- scrapping costs 365
- Scrapping material 365, 366
- scrapping procedure 365
- search criteria 447
- search parameters 178
- search procedures 182
- search strategies 182
- Search Term 139
- search tool 448
- search type 186
- seasonal 338
- Seasonal Fluctuations 93, 337
- seasonal forecast model 92, 337
- seasonal index 94, 338
- seasonal market 334
- Seasonal model 334, 336
- seasonal pattern 334, 340
- Seasonal Trend Model 334, 336
- Second Order Trend Model 336
- selection criteria 185, 253, 268, 271, 272, 300, 354, 410, 415, 419, 421, 423
- selection fields 185
- selection method 121
- selection procedures 338, 340
- selection type 185
- selection-procedure 93
- sell by batch 190
- semi-automatic criteria 239
- semi-finished 54, 65
- semi-finished goods 59, 65
- serial number 60, 61, 62
- serial number master record 61

serial number profile 60, 61, 62  
 serial number usage 62  
 serialized 60  
 Serializing Procedures 61  
 servers 25  
 service 54, 161, 162, 245, 247, 256, 257,  
 258, 270, 285, 290, 317  
 service bulletin 450  
 service category 303, 308  
 service entry sheet 300, 303, 312, 313  
 service financial postings 305  
 Service Level 129  
 service management 308  
 service master 303, 305, 306, 307  
 service master record 303  
 service number 303, 311  
 service purchase order 311  
 service revenues 100  
 service sheet entry 311  
 service specifications 303, 310  
 service type 308  
 service type number 307  
 service-agent procedure group 142,  
 143  
 Service-Based Invoice Verification 158  
 service-entry sheet 158  
 Services 64  
 services 40, 48, 158, 172, 221, 225, 233,  
 235, 241, 243, 244, 286, 290, 291, 303,  
 308, 311, 315, 395  
 Settlement of production orders 429  
 settlement rule 204  
 setup time 96, 104  
 shelf life 111, 176  
 shelf-life characteristics 107  
 Shelf-Life Data 110  
 shelf-life date 176  
 shelf-life expiration date 111, 176  
 shipping 104  
 shipping documents 88  
 shipping instruction 85  
 shipping instruction indicator 85  
 shipping point determination 103  
 ship-to address 225  
 short-term labor requirements 95  
 significance test 93, 338  
 simple algorithm 145  
 simulation 397  
 single account assignment 284  
 single level material 122  
 single sourcing 226, 227, 255, 341  
 single-level material price determi-  
 nation 429, 430  
 slow movement 422  
 slow moving stock 359, 423  
 smallest mean absolute deviation 338  
 smoothing factor 93, 94, 338, 340  
 social security number 141  
 sole proprietor 159  
 sole vendor 137  
 sort key 147  
 sort sequence 185  
 source 229  
 source determination 218, 229, 230  
 source list 82, 86, 226, 227, 228, 229,  
 230, 231, 279  
 source of supply 228, 230, 279  
 sourcing 230  
 spare parts 64  
 special characters 45  
 special goods movement 114  
 special movement indicator 114  
 special status 346  
 special stock 357, 383  
 special terms 225  
 special-procurement key 128  
 special-stock indicator 357  
 specifications 179, 451  
 split valuation 131  
 splitting indicator 119  
 standard carrier alpha code 142  
 standard occupation classification  
 system 433  
 standard price 47, 132, 133, 369, 425,  
 429, 430  
 standard price control 429  
 standard reports 300  
 standard service catalog 306, 307  
 standard text 106  
 standard text key 106  
 standard wording 75  
 static rounding profile 101  
 statistical data 172  
 statistical information 171  
 status of the classification 178  
 status-switch indicator 450

stochastic 404, 405  
 stochastic block 405, 406  
 stock 33  
 stock account 393  
 stock balance 379, 429  
 stock check 61  
 stock determination group 104  
 stock determination strategy 104  
 stock determination type 104  
 stock in quality inspection 346  
 stock in transit 359, 360  
 stock level 342, 368, 373, 377, 384  
 stock movements 324  
 stock on-hand report 384  
 stock outs 382  
 stock overview 341, 351  
 stock placement 113, 114, 358  
 stock posting 360  
 stock removal 113, 115, 358  
 stock transfer 247, 287, 342, 351, 356,  
 360  
 stock transfer inspection 117  
 stock transport scheduling agreement  
 287  
 stock/requirements list 322, 323  
 stock-transport order 249  
 storage bin 33, 36, 38, 39, 107, 113, 115,  
 116  
 storage bin stock 115  
 storage conditions 109  
 storage costs indicator 128  
 storage location 25, 33, 34, 35, 36, 37,  
 43, 72, 95, 107, 129, 204, 320, 321, 341,  
 342, 351, 352, 356, 357, 358, 359,  
 360, 375, 383, 384, 386  
 storage location address 34  
 storage location level 320, 321  
 storage location planning 320  
 storage location transfer 359  
 storage section 38, 108  
 storage section indicator 114  
 storage section search 114  
 storage strategies 113  
 storage type 36, 38, 72, 112, 113, 114, 115  
 storage type indicator 113  
 storage type search 114  
 storage unit handling 113  
 storage unit type 113  
 strategic alliances 273  
 strategy group 120  
 strategy type 185  
 strategy types 182, 184, 186  
 street address 139  
 structural organization 39  
 structured framework 433  
 sub-assembly planning 121  
 subcontracting 54, 162, 243, 247, 257,  
 287  
 subcontractor 244, 300  
 subcriteria 235, 236, 239  
 sub-ledger 147  
 subordinate classes 443  
 subsequent settlement 157, 158  
 superior class 443  
 supplier 48  
 supply 233  
 supply chain 21, 22, 23, 24  
 supplying material 137  
 supplying plant 360  
 surcharges 232, 308  
 syntax 444

**T**

takt time 128  
 target dollar amount 288  
 target QM system 118  
 target quantity 288  
 target value 291  
 task group list 135  
 task list 106, 107, 204  
 task list group 135  
 task list type 135  
 task list usage 105  
 tax 141  
 tax amount fields 397  
 tax calculations 233  
 tax categories 100  
 tax code 83  
 tax conditions 233  
 tax details 397  
 tax identification number 141  
 tax indicator 83, 305  
 tax information 140  
 tax jurisdiction code 139, 141  
 tax price 133  
 tax rate 233

tax regulations 345  
tax type 141  
taxable service 305  
tax-calculation procedures 100  
tax-condition tables 100  
taxes 167, 308  
Taxware 139, 141  
technical object 65, 243  
technical specifications 449  
temperature conditions 108  
terms and conditions 268, 286  
terms of delivery 288  
testing 366  
testing specifications 57  
three-way match 24, 226, 395  
threshold amount 406  
threshold value 390, 405, 406  
time-phased planning 127, 327, 330  
time-phased planning procedure 330  
tolerance 151, 165, 176, 365, 366, 389, 402  
tolerance group 151, 152  
tolerance key 402, 408  
tolerance limit 83, 402  
tolerance limit indicator 402  
torn down 96  
total consumption 318  
total planning run 125  
total price condition 309  
total replenishment lead time 121  
total shelf life 111  
tracking limit 92, 337  
trade definitions 156  
trading good 64, 65, 66, 69, 81  
trading goods revenues 100  
trading partner 140, 273  
transaction sets 295  
transaction variances 427  
transaction-based material price determination 430, 431  
transfer posting 352, 356, 384, 429  
transfers 343  
transport confirmation 294  
transport order 246  
transportation 227  
transportation area 83  
transportation department 142  
transportation group 103

transportation information 83  
transportation requirements 103  
transportation vehicle 104  
trend 93, 337, 338, 340  
trend model 334, 336  
trend pattern 93  
trend value 94, 338  
trial posting 397  
two-step picking 114  
two-step procedure 356, 357, 358, 359, 360  
two-way match 24, 157, 395, 398

## U

U.S. Department of Transportation 142  
unalterable logs 449  
under-delivery tolerance 85, 96  
under-delivery tolerance percentage 96  
unequal weighting 237  
unique task list 135  
unit of measure 75, 82, 95, 98, 101, 112, 121, 164, 192, 250, 311, 454  
unit of measure conversions 75  
unit price 227, 429  
Universal Product Code 78  
unlimited over-delivery 96  
unplanned basis 363  
unplanned consumption 318  
unplanned goods issue 363  
unplanned issue 361  
unplanned service 310, 312  
unrestricted 176, 347, 383  
unrestricted status 59  
unrestricted stock 346, 351, 358, 359, 360, 365, 381  
UPC 78  
urging letters 84, 164  
usage decisions 117  
usage key 204  
usage value formula 107  
use tax 100  
user defined 67  
user group 187, 189, 190  
user-defined BIC 189  
use-tax responsibility 141

## V

validation 145  
validity date range 259  
validity dates 167, 204, 230, 288  
validity period 232, 308, 315  
valuated 67  
valuated transactions 428  
valuation 131, 132, 134, 411, 417, 425, 426  
valuation area 67, 69, 412, 417, 423  
valuation category 131  
valuation class 132, 305, 419, 421, 426  
valuation level 32  
valuation method 419  
valuation-relevant transactions 427  
value basis 69  
value contract 290, 291  
value determination 415, 419  
value limit 315  
value templates 437  
variable attributes 66  
variable order unit 82  
variable sales unit not allowed indicator 99  
variance 85, 237, 238, 383, 401, 402, 404, 408  
variance location 389  
variance percentage 392  
variant configuration 22, 66, 79  
VAT 141  
vendor 22, 23, 24, 39, 40, 48, 49, 51, 54, 63, 64, 65, 66, 75, 82, 83, 84, 85, 89, 118, 137, 139, 140, 141, 143, 144, 146, 147, 148, 150, 151, 153, 154, 155, 156, 157, 158, 159, 160, 161, 162, 163, 164, 165, 166, 167, 174, 176, 207, 209, 210, 211, 212, 213, 216, 217, 218, 219, 220, 221, 222, 223, 224, 226, 227, 228, 229, 230, 231, 232, 233, 237, 238, 239, 240, 241, 243, 254, 255, 262, 263, 264, 267, 268, 269, 270, 271, 273, 274, 275, 276, 277, 279, 280, 281, 286, 288, 290, 291, 293, 294, 295, 296, 297, 300, 315, 330, 341, 342, 345, 346, 347, 348, 349, 350, 373, 375, 382, 395, 398, 399, 400, 404, 433, 434, 454  
vendor account 147  
vendor account groups 52, 53, 160

vendor acknowledgement 295  
vendor address 263  
vendor batch number 176  
Vendor confirmation 294, 295  
vendor declaration status 88  
vendor evaluation 85, 233, 235, 236, 238  
vendor master 43, 47, 48, 137, 138, 139, 141, 150, 152, 155, 160, 207, 209, 212, 213, 214, 217, 219, 220, 454  
vendor master file 160  
vendor master record 48, 49, 83, 149, 151, 210, 211, 215, 217, 219, 399, 454  
vendor name 139, 143  
vendor number 52, 137, 145, 146, 147, 160, 214, 227  
vendor number range 52, 207, 208, 209  
vendor partner codes 159  
Vendor Recipient Type 149  
Vendor Selection 262  
vendor sub-range 159, 164, 165, 207, 219, 220  
vendors 24, 50, 65, 75, 80, 83, 118, 137, 139, 141, 142, 147, 151, 158, 159, 279, 291, 300, 341, 397, 399, 407, 434, 448, 456  
verification 143  
verification levels 143  
Version Assigned Automatically 450  
version number 180, 450, 451  
Vertex 139, 141  
Volume Rebate Group 99

## W

Wait time 97  
warehouse 25, 33, 36, 37, 38, 39, 107, 113, 114, 115, 174, 365, 367, 376, 379, 383, 384, 416  
Warehouse Management 22, 33, 35, 36, 107, 108, 111, 114, 182, 183  
warehouse management movement type 114  
Warehouse Management Unit of Measure 112  
warehouse number 72, 198  
warehouse sections 383  
warehouse stock 320

WBS element 453  
weighted moving average 93  
Weighted Moving Average Model 336  
weighting key 233, 238  
wholesaler 227  
Withdrawal 345  
withholding tax 146, 149, 150  
work centers 96, 97, 364  
work in process 411  
Work Scheduling 65, 94, 104, 174, 202  
Workflow 24  
Working capital 411  
wxternal service management 303

## **Y**

yearly inventory 383

## **Z**

zero value 382